

CUSTOMER NOTICE

ANALOG DEVICES HAS MADE A BEST EFFORT TO DESIGN A CIRCUIT THAT MEETS CUSTOMER-SUPPLIED SPECIFICATIONS; HOWEVER, IT REMAINS THE CUSTOMER'S RESPONSIBILITY TO VERIFY PROPER AND RELIABLE OPERATION IN THE ACTUAL APPLICATION. COMPONENT SUBSTITUTION AND PRINTED CIRCUIT BOARD LAYOUT MAY SIGNIFICANTLY AFFECT CIRCUIT PERFORMANCE OR RELIABILITY. CONTACT ANALOG DEVICES APPLICATIONS ENGINEERING FOR ASSISTANCE.

THIS CIRCUIT IS PROPRIETARY TO ANALOG DEVICES AND SUPPLIED FOR USE WITH ANALOG DEVICES PARTS.

APPROVALS

PCB DES.	AN
APP ENG.	HZ



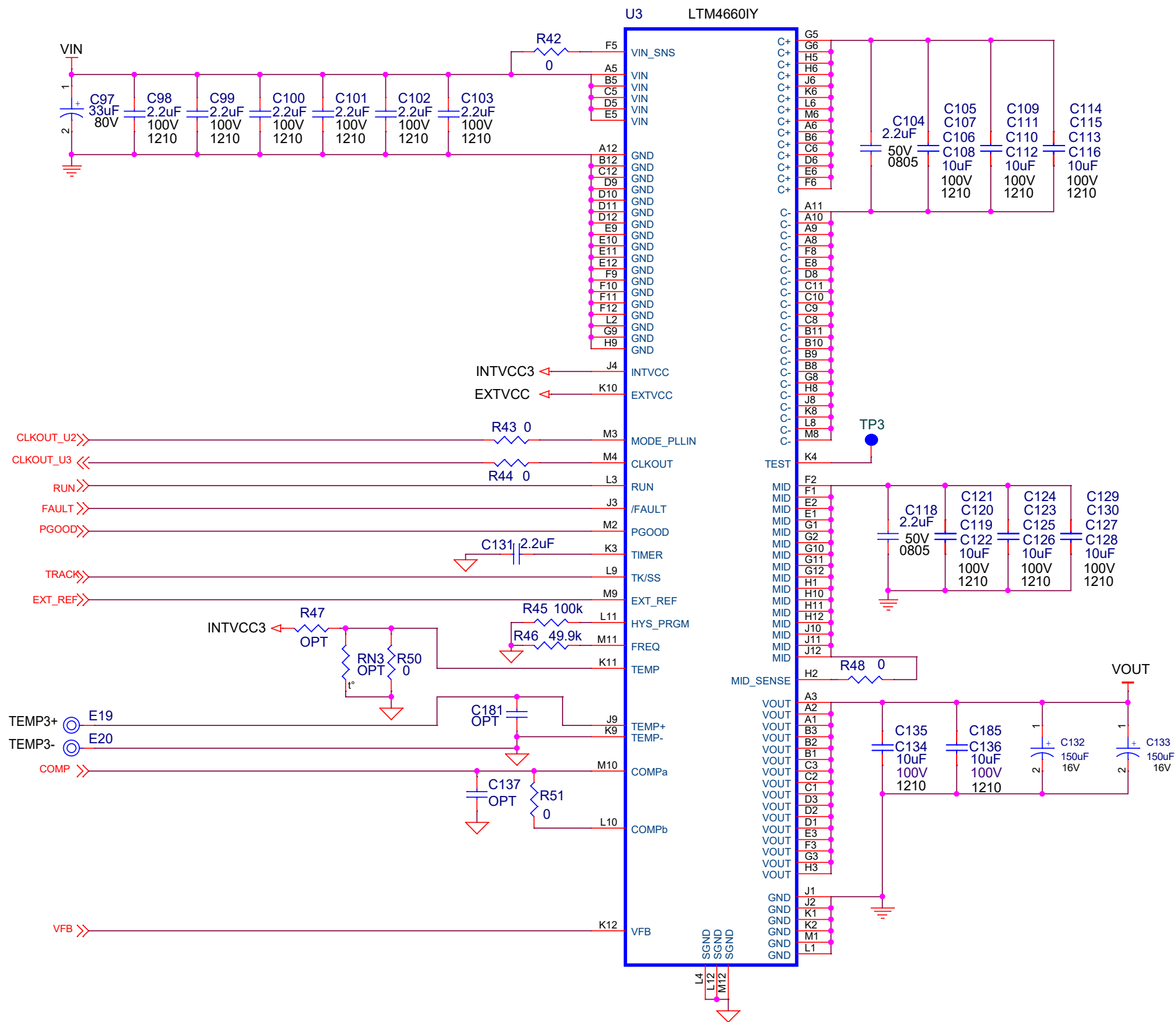
TITLE: SCHEMATIC


High Efficiency, PolyPhase, Hybrid Step-down μ Module Bus Converter

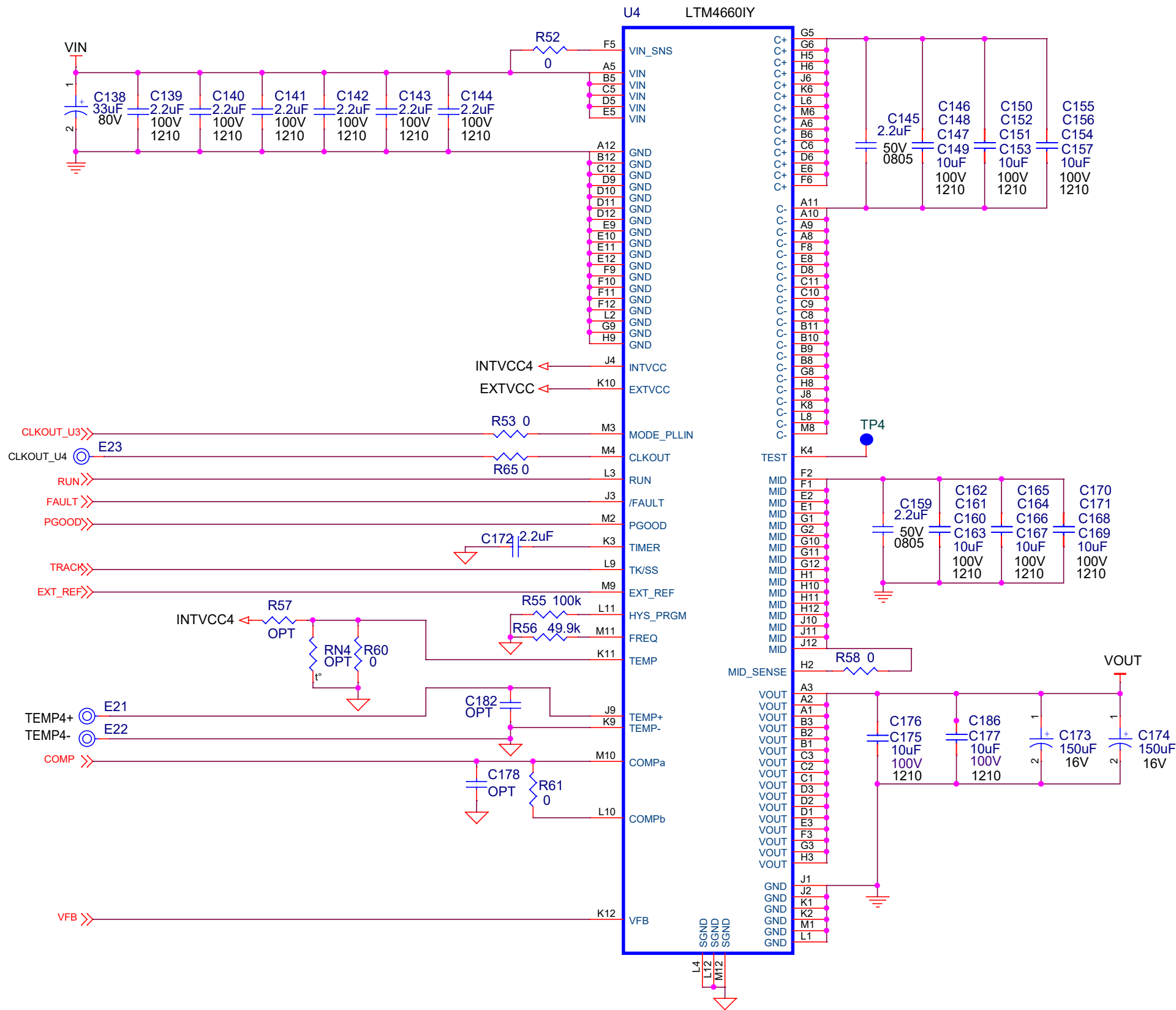
IC NO. LTM4660IY
SKU NO. DC2959A

SCHEMATIC NO. AND REVISION:
710-DC2959A(A,B,C)_REV02

SIZE: N/A DATE: Thursday, February 09, 2023 SHEET 2 OF 6



CUSTOMER NOTICE		APPROVALS		 ANALOG DEVICES	
ANALOG DEVICES HAS MADE A BEST EFFORT TO DESIGN A CIRCUIT THAT MEETS CUSTOMER-SUPPLIED SPECIFICATIONS; HOWEVER, IT REMAINS THE CUSTOMER'S RESPONSIBILITY TO VERIFY PROPER AND RELIABLE OPERATION IN THE ACTUAL APPLICATION. COMPONENT SUBSTITUTION AND PRINTED CIRCUIT BOARD LAYOUT MAY SIGNIFICANTLY AFFECT CIRCUIT PERFORMANCE OR RELIABILITY. CONTACT ANALOG DEVICES APPLICATIONS ENGINEERING FOR ASSISTANCE.		PCB DES.	AN		
		APP ENG.	HZ		
				TITLE: SCHEMATIC	
				High Efficiency, PolyPhase, Hybrid Step-down μ Module Bus Converter	
				IC NO. LTM4660IY SKU NO. DC2959A	
THIS CIRCUIT IS PROPRIETARY TO ANALOG DEVICES AND SUPPLIED FOR USE WITH ANALOG DEVICES PARTS.				SCHEMATIC NO. AND REVISION: 710-DC2959A(A,B,C)_REV02	
				SIZE: N/A	DATE: Thursday, February 09, 2023
				SHEET 3 OF 6	



CUSTOMER NOTICE

ANALOG DEVICES HAS MADE A BEST EFFORT TO DESIGN A CIRCUIT THAT MEETS CUSTOMER-SUPPLIED SPECIFICATIONS; HOWEVER, IT REMAINS THE CUSTOMER'S RESPONSIBILITY TO VERIFY PROPER AND RELIABLE OPERATION IN THE ACTUAL APPLICATION. COMPONENT SUBSTITUTION AND PRINTED CIRCUIT BOARD LAYOUT MAY SIGNIFICANTLY AFFECT CIRCUIT PERFORMANCE OR RELIABILITY. CONTACT ANALOG DEVICES APPLICATIONS ENGINEERING FOR ASSISTANCE.

THIS CIRCUIT IS PROPRIETARY TO ANALOG DEVICES AND SUPPLIED FOR USE WITH ANALOG DEVICES PARTS.

APPROVALS

PCB DES.	AN
APP ENG.	HZ



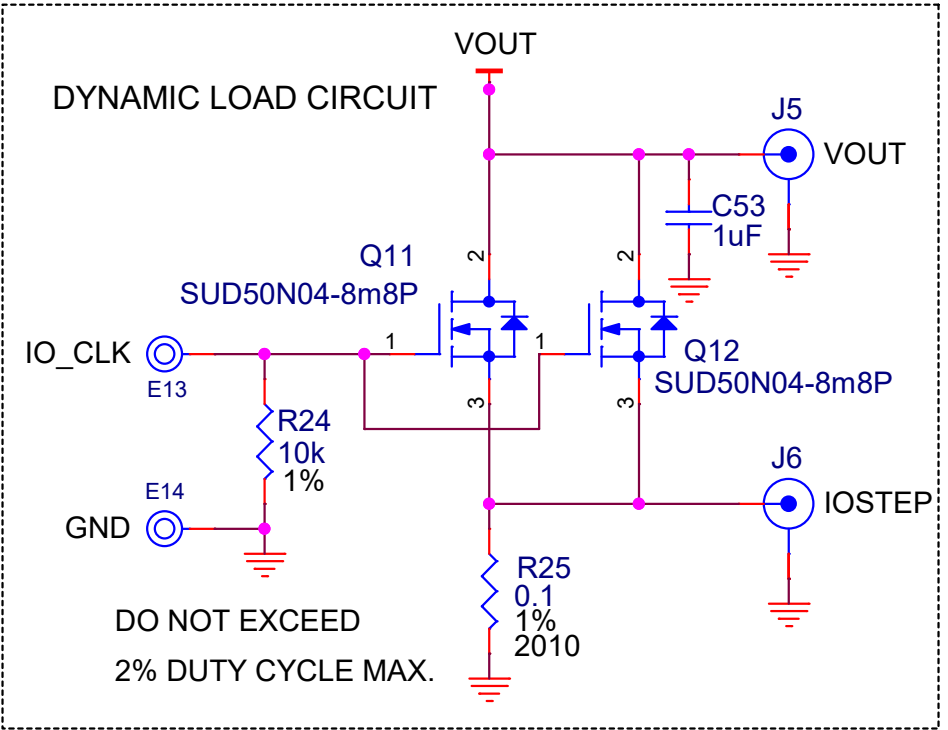
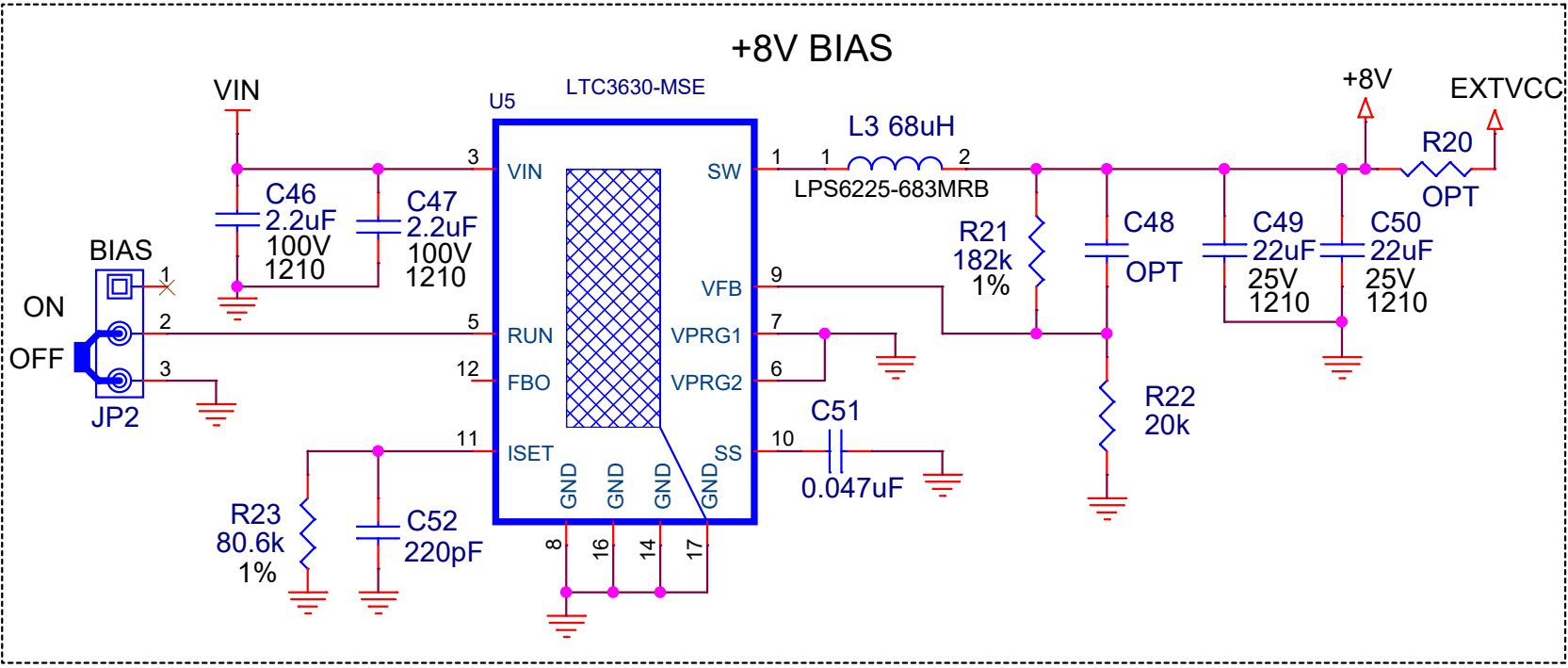
TITLE: SCHEMATIC

High Efficiency, PolyPhase, Hybrid Step-down μ Module Bus Converter

IC NO. LTM4660IY
SKU NO. DC2959A

SCHEMATIC NO. AND REVISION:
710-DC2959A(A,B,C)_REV02

SIZE: N/A DATE: Thursday, February 09, 2023 SHEET 4 OF 6



**

VERSION	IOUT	U3	U4	C134,C135C136,C185	C175,C176,C177,C186	C132,C133	C173,C174	C105-C116, C119-C130	C146-C157, C160-C171	R19
- A	50A	OPT	OPT	OPT	OPT	OPT	OPT	OPT	OPT	2.15K
- B	75A	LTM4660	OPT	10uF	OPT	150uF	OPT	10uF	OPT	1.43K
- C	100A	LTM4660	LTM4660	10uF	10uF	150uF	150uF	10uF	10uF	1.07K


CUSTOMER NOTICE

ANALOG DEVICES HAS MADE A BEST EFFORT TO DESIGN A CIRCUIT THAT MEETS CUSTOMER-SUPPLIED SPECIFICATIONS; HOWEVER, IT REMAINS THE CUSTOMER'S RESPONSIBILITY TO VERIFY PROPER AND RELIABLE OPERATION IN THE ACTUAL APPLICATION. COMPONENT SUBSTITUTION AND PRINTED CIRCUIT BOARD LAYOUT MAY SIGNIFICANTLY AFFECT CIRCUIT PERFORMANCE OR RELIABILITY. CONTACT ANALOG DEVICES APPLICATIONS ENGINEERING FOR ASSISTANCE.

THIS CIRCUIT IS PROPRIETARY TO ANALOG DEVICES AND SUPPLIED FOR USE WITH ANALOG DEVICES PARTS.

APPROVALS

PCB DES.	AN
APP ENG.	HZ

**ANALOG
DEVICES**

TITLE: SCHEMATIC

High Efficiency, PolyPhase, Hybrid Step-down μ Module Bus Converter

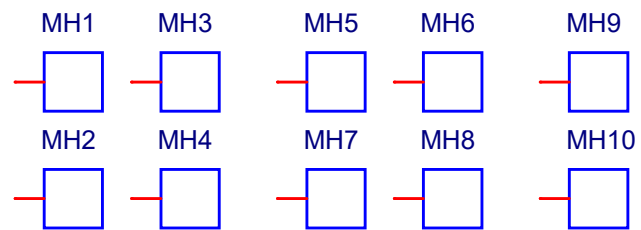
IC NO. LTM4660IY
SKU NO. DC2959A

SCHEMATIC NO. AND REVISION:
710-DC2959A(A,B,C)_REV02

SIZE: N/A

DATE: Thursday, February 09, 2023

SHEET 5 OF 6



STANDOFFS

LB1 LABEL

STNCL1	TOOL, STENCIL, DC2959A	REV02
PCB1	PCB, DC2959A	REV02

CUSTOMER NOTICE

ANALOG DEVICES HAS MADE A BEST EFFORT TO DESIGN A CIRCUIT THAT MEETS CUSTOMER-SUPPLIED SPECIFICATIONS; HOWEVER, IT REMAINS THE CUSTOMER'S RESPONSIBILITY TO VERIFY PROPER AND RELIABLE OPERATION IN THE ACTUAL APPLICATION. COMPONENT SUBSTITUTION AND PRINTED CIRCUIT BOARD LAYOUT MAY SIGNIFICANTLY AFFECT CIRCUIT PERFORMANCE OR RELIABILITY. CONTACT ANALOG DEVICES APPLICATIONS ENGINEERING FOR ASSISTANCE.

THIS CIRCUIT IS PROPRIETARY TO ANALOG DEVICES AND SUPPLIED FOR USE WITH ANALOG DEVICES PARTS.

APPROVALS

PCB DES.	AN
APP ENG.	HZ



TITLE: SCHEMATIC

High Efficiency, PolyPhase, Hybrid Step-down μ Module Bus Converter

IC NO.	LTM4660IY
SKU NO.	DC2959A

SCHEMATIC NO. AND REVISION:
7710-DC2959A(A,B,C)_REV02

SIZE: N/A	DATE: Thursday, February 09, 2023	SHEET 6 OF 6
------------------	--	----------------------------