



Dual-Channel, 42 V, 4 A Monolithic Synchronous Step-Down Silent Switcher 2 with 6.2 μ A Quiescent Current

Hua (Walker) Bai
Analog Devices, Inc.

The **LT8650S** 42 V, dual-channel, 4 A synchronous Silent Switcher® 2 regulator features a wide input voltage range of 3 V to 42 V, ideal for automotive, industrial, and other step-down applications. Its quiescent current is only 6.2 μ A with the outputs in regulation—a critical feature in automotive environments where always-on systems can drain the battery even when the car is not running. In many switching regulator designs, EMI can be a problem if the board layout does not adhere to stringent layout standards. This is not the case with a Silent Switcher 2 design, where automotive EMI standards are easily passed with minimal layout concerns.

7.5 V/4 A and 3.3 V/4 A Outputs Have a Fast Transient Response

Figure 1 shows a dual output regulator designed to optimize the transient response. Although the LT8650S includes internal compensation, external compensation is used to minimize the transient response time and output voltage excursions. Switching is at 2 MHz, allowing higher loop bandwidth and a faster transient response.

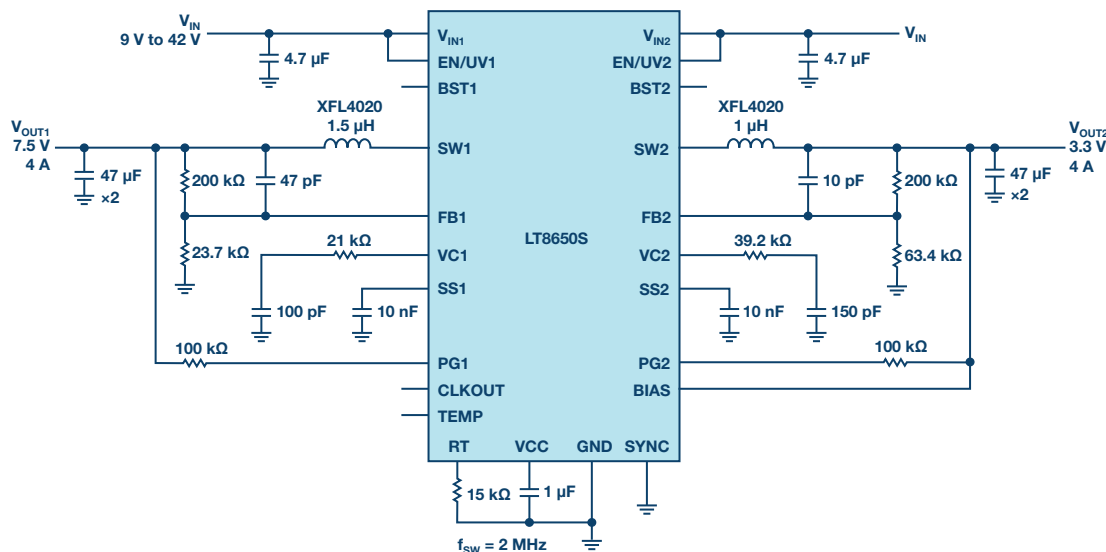


Figure 1. 7.5 V/4 A and 3.3 V/4 A outputs feature fast transient response.

Figure 2 shows the output response to a 0 A to 4 A load step, where V_{OUT} drops less than 100 mV for both the 3.3 V and 7.5 V outputs. This response is combined with high initial accuracy for a solution that meets tight V_{OUT} tolerance.

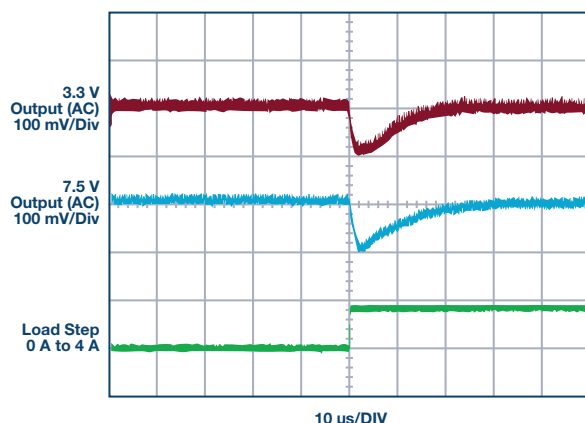


Figure 2. 0 A to 4 A transient responses of the circuit in Figure 1 (Burst Mode[®] operation).

Paralleled Outputs Deliver 9 V/8 A from 24 V While Remaining Cool

The LT8650S packs two synchronous step-down regulators into a 4 mm × 6 mm package. The two outputs can be easily paralleled for high current as shown by the 72 W output, 24 V input design in Figure 3. Efficiency at full load is 95%, with the thermal performance of the board shown in Figure 4. Running at room temperature, the hottest part of the IC reaches about 75°C without active cooling.

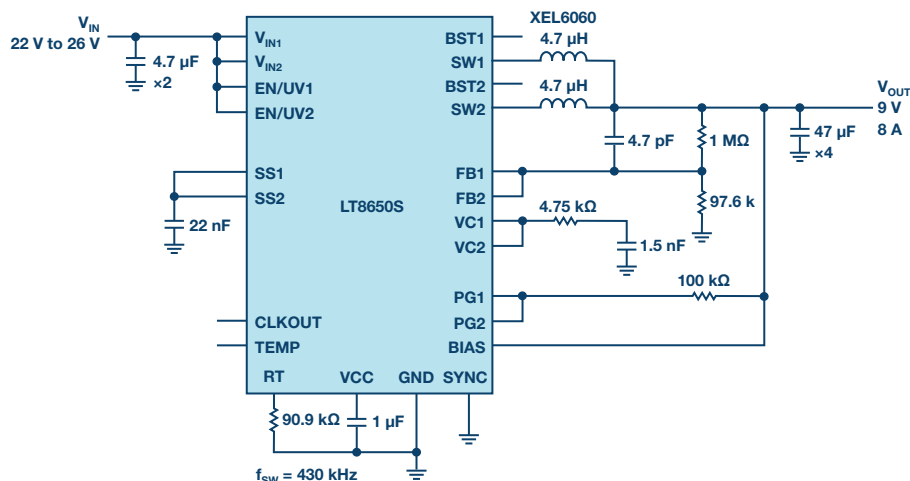


Figure 3. Paralleled outputs deliver 9 V/8 A from a 24 V input while remaining cool.

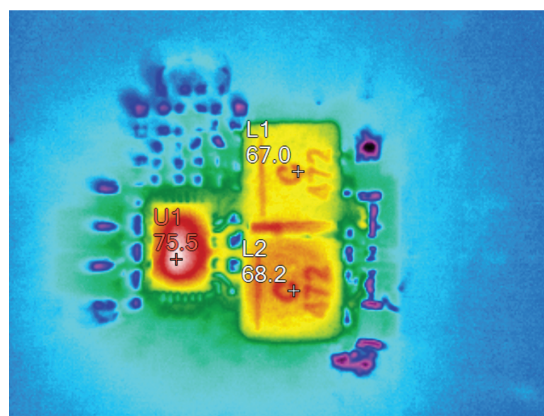


Figure 4. Thermal performance of the circuit in Figure 3.

The temperature and efficiency are even better for a 12 V input. When paralleling, it is important to balance the current between the outputs by tying the outputs of error amplifiers together. This can be achieved by connecting VC1 and VC2 together and using external compensation. For applications that require a larger thermal budget, the LT8650H operates with a 150°C junction temperature.

3.3 V/3 A and 1 V/5 A Running at 2 MHz for an SoC Application

Many system on a chip (SoC) applications require 3.3 V for peripherals and 1 V for the core. Figure 5 shows the LT8650S used in a cascade topology, where the input for the 1 V converter is powered by the 3.3 V output. There are a number of benefits of a cascade configuration over powering V_{IN2} from the main supply, including reduced solution size and constant 2 MHz operation.

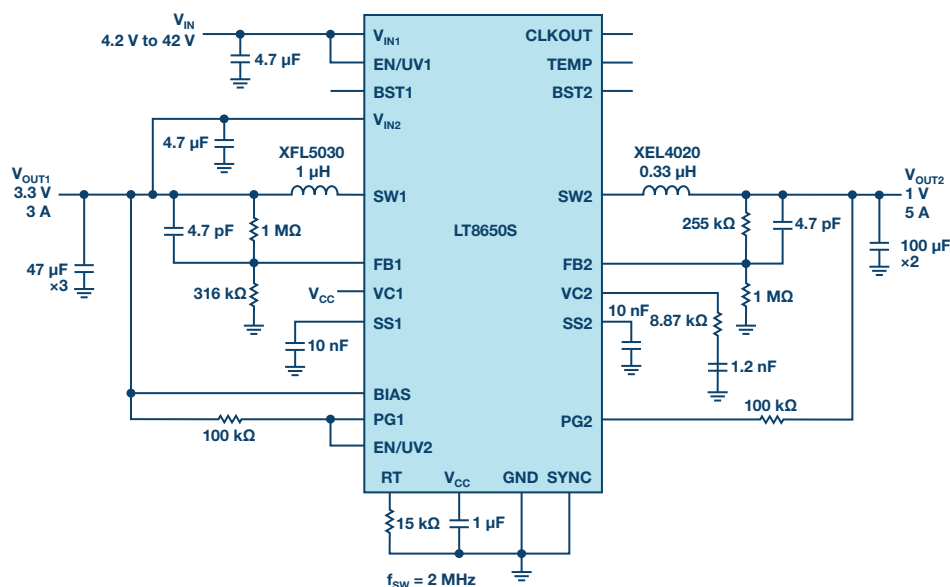


Figure 5. 3.3 V/3 A and 1 V/5 A circuit running at 2 MHz for a SoC application.

The 4 A current rating per channel of the LT8650S is based on thermal limitations, but each channel can electrically deliver 6 A if temperature rise is managed with additional cooling. In the solution of Figure 5, the output power of the 1 V channel 2 is low, so it can deliver 5 A.

Conclusion

The LT8650S features a wide input range, low quiescent current, and Silent Switcher 2 design. Packing two 4 A synchronous step-down regulators in a 4 mm × 6 mm package reduces part count and solution size while allowing design flexibility for a broad range of applications.

About the Author

Hua (Walker) Bai is an applications engineer at Analog Devices, Inc. He provides technical support for customers in many applications. Before his current position, he worked for Jacobs Vehicle Systems and BEI Technologies. He earned his Ph.D. in electrical engineering from the University of Missouri-Rolla in 2001. He can be reached at hua.bai@analog.com.

Online Support Community



Engage with the Analog Devices technology experts in our online support community. Ask your tough design questions, browse FAQs, or join a conversation.

Visit ez.analog.com

Analog Devices, Inc. Worldwide Headquarters

Analog Devices, Inc.
One Technology Way
P.O. Box 9106
Norwood, MA 02062-9106
U.S.A.
Tel: 781.329.4700
(800.262.5643, U.S.A. only)
Fax: 781.461.3113

Analog Devices, Inc. Europe Headquarters

Analog Devices GmbH
Otto-Aicher-Str. 60-64
80807 München
Germany
Tel: 49.89.76903.0
Fax: 49.89.76903.157

Analog Devices, Inc. Japan Headquarters

Analog Devices, KK
New Pier Takeshiba
South Tower Building
1-16-1 Kaigan, Minato-ku,
Tokyo, 105-6891
Japan
Tel: 813.5402.8200
Fax: 813.5402.1064

Analog Devices, Inc. Asia Pacific Headquarters

Analog Devices
5F, Sandhill Plaza
2290 Zuchongzhi Road
Zhangjiang Hi-Tech Park
Pudong New District
Shanghai, China 201203
Tel: 86.21.2320.8000
Fax: 86.21.2320.8222

©2018 Analog Devices, Inc. All rights reserved. Trademarks and registered trademarks are the property of their respective owners. Ahead of What's Possible is a trademark of Analog Devices.
DN20295-0-6/18

analog.com



AHEAD OF WHAT'S POSSIBLE™