

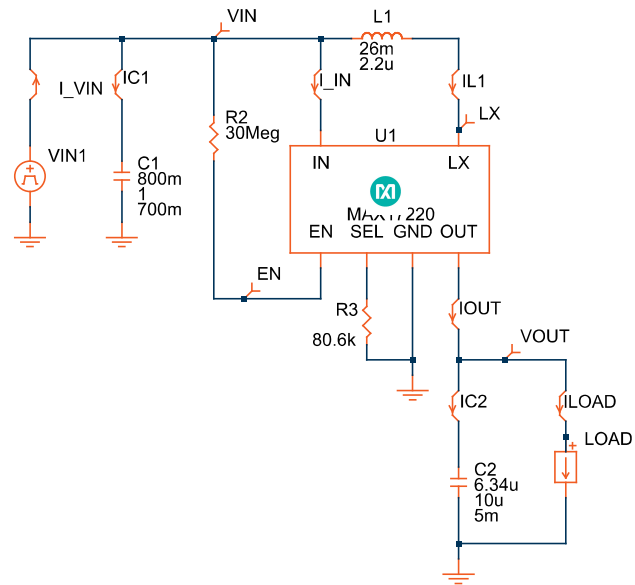
MAXREFDES1215 MAX17220

EE-Sim® OASIS Schematic Documentation

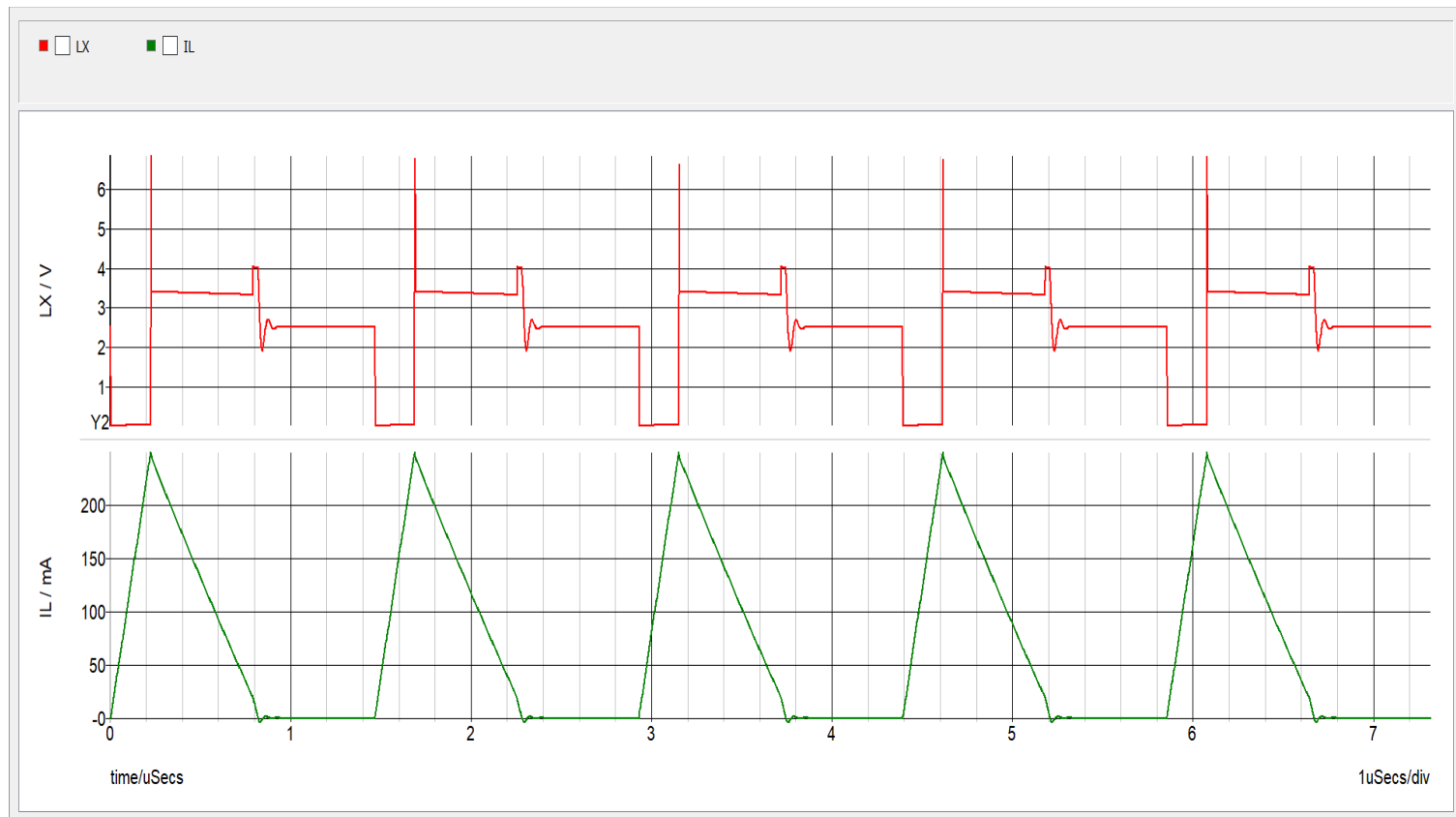
Design Requirements and Configuration

Primary Specifications	Values	Comments
Part Number:	MAX17220	
Schematic Name:	MAXREFDES1215	
Mode:		
Default Simulation:	POP & AC Loop & Load Step	Startup schematic included
Design Requirements:		
Vin(Max):	2.7 V	
Vin(Nom):	2.5 V	
Vin(Min):	2.3 V	
Switching Frequency:	2.5 MHz	
Vout:	3.3 V	
Iout:	50 mA	
Other Key Specs		

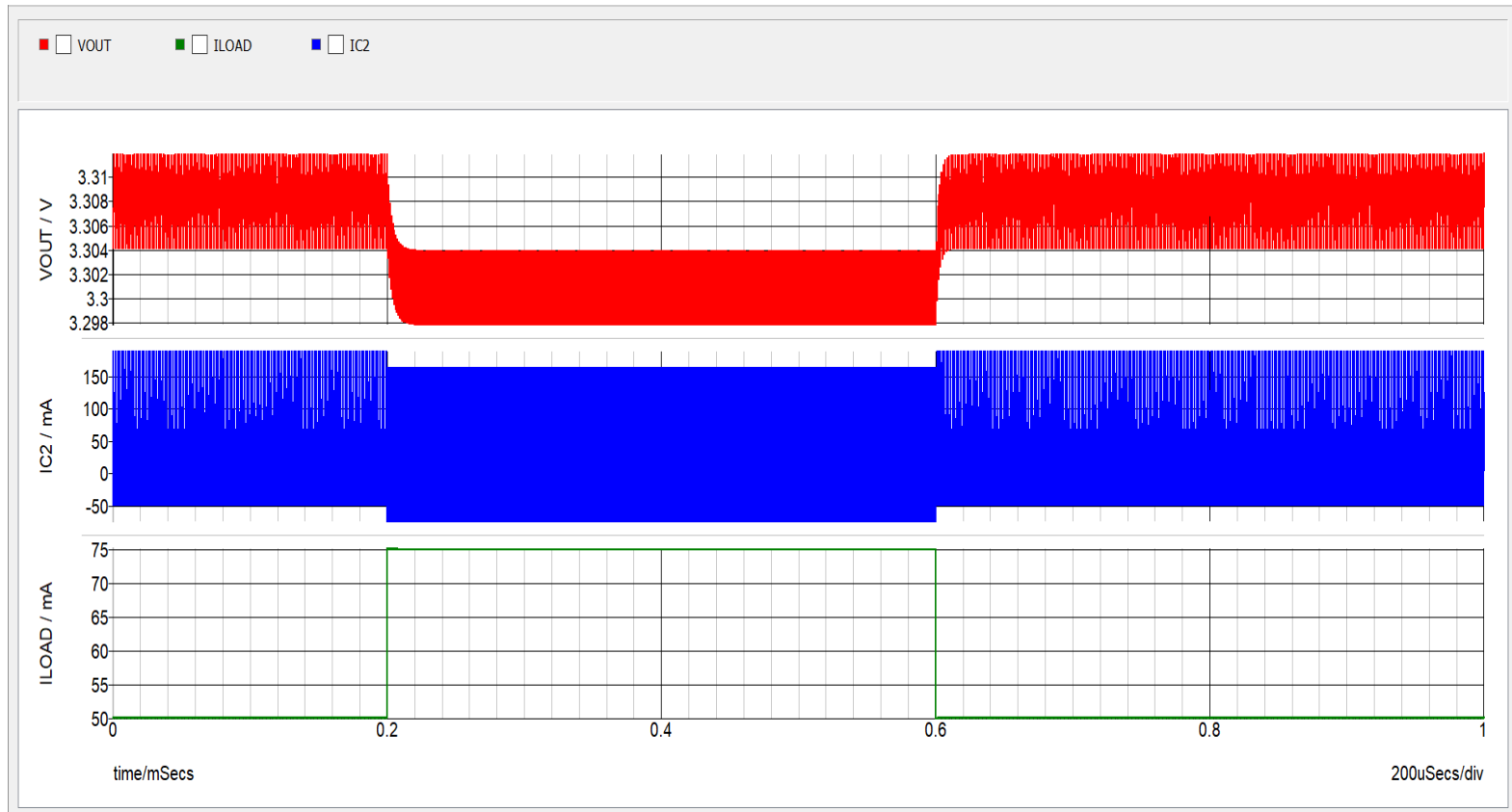
Schematic



Switching Waveforms



Load Step Transient Response



Startup

