

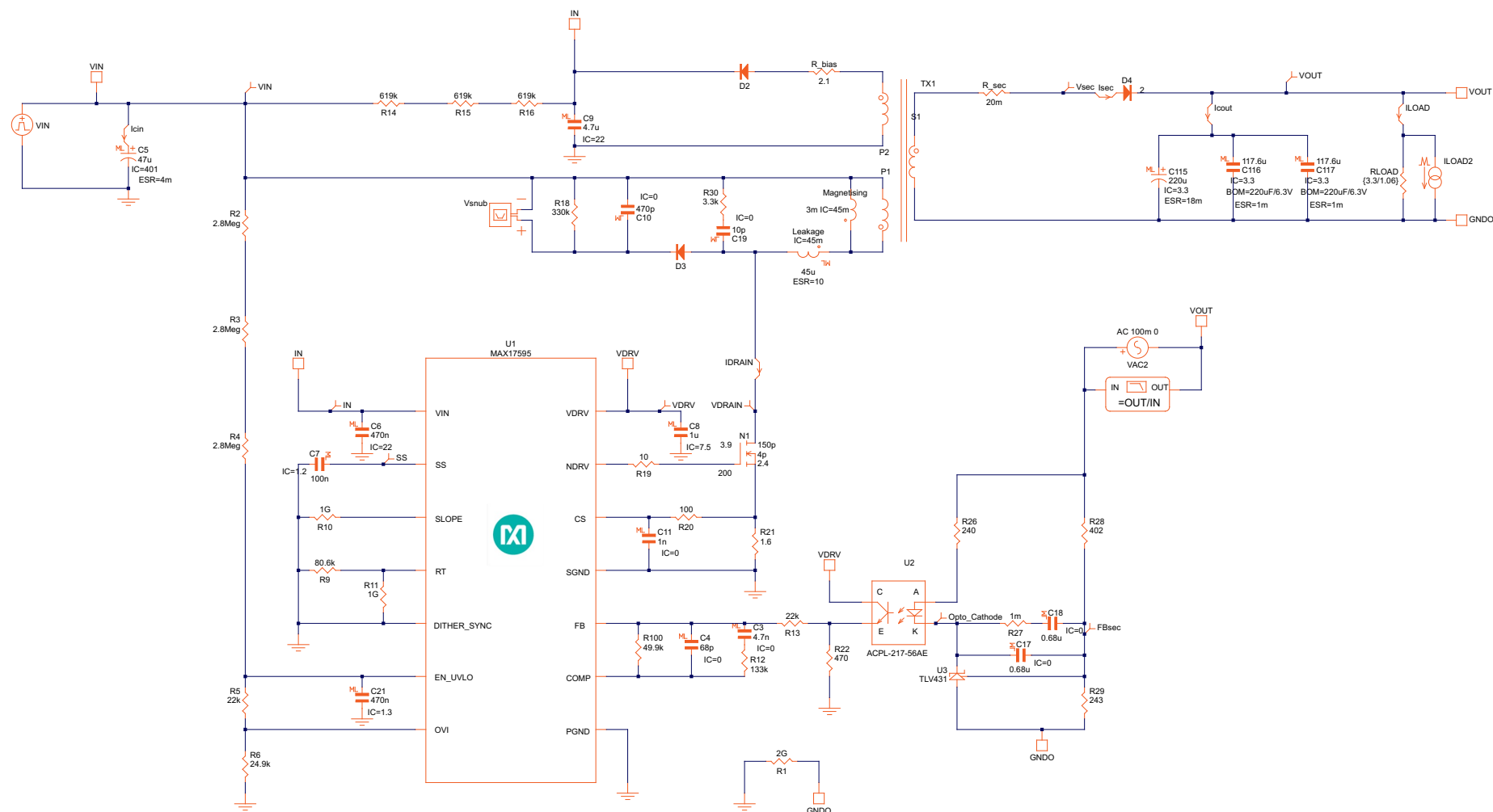
MAXREFDES1182

OASIS Schematic Documentation

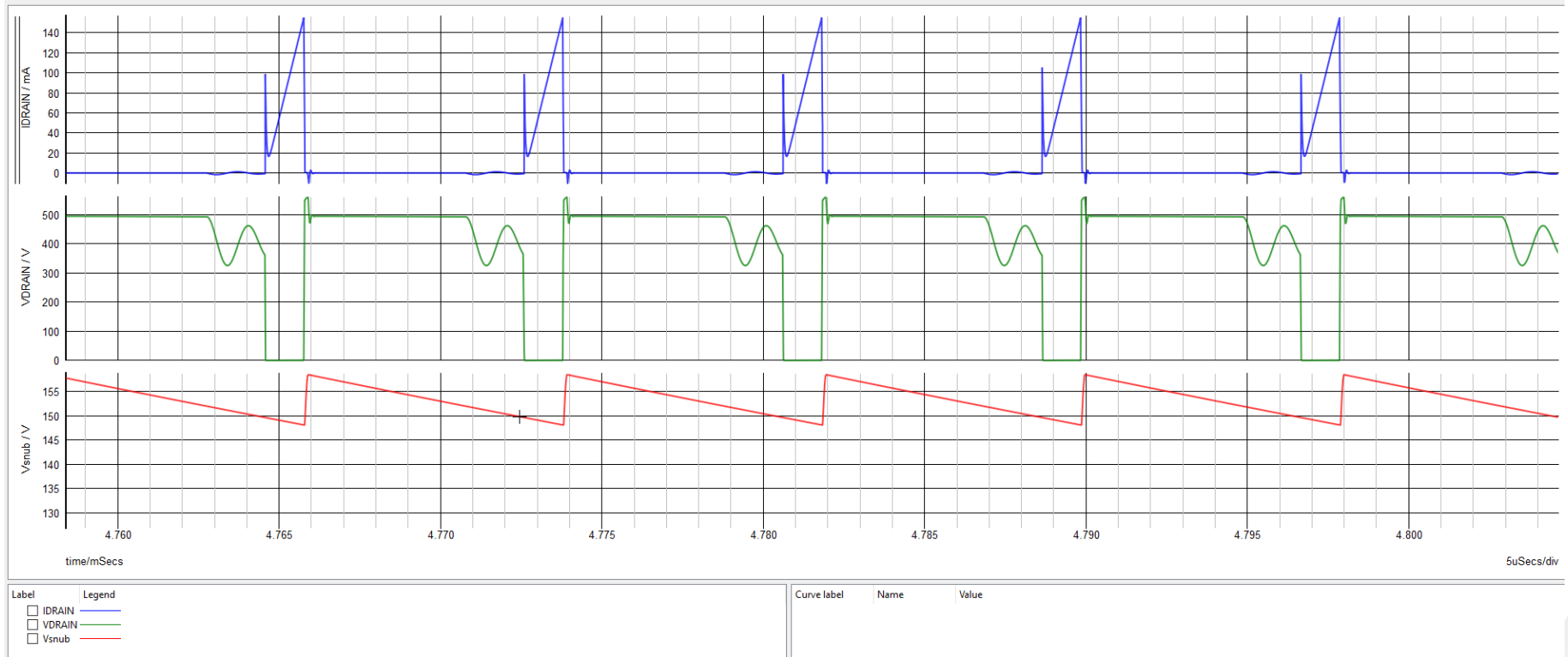
MAXREFDES1182 Design Requirements and Configuration

Primary Specifications	Values	Comments
Part Number:	MAX17595	
Schematic Name:	MAXREFDES1182	
Mode:	Offline Isolated DCM Flyback	
Default Simulation:	Steady-State (POP), AC Loop, Load Step	
Design Requirements:		
Vin(Max):	176VAC	
Vin(Nom):	220VAC	
Vin(Min):	284VAC	
Switching Frequency:	125kHz	
Vout:	3.3V	
Iout:	1.06A	

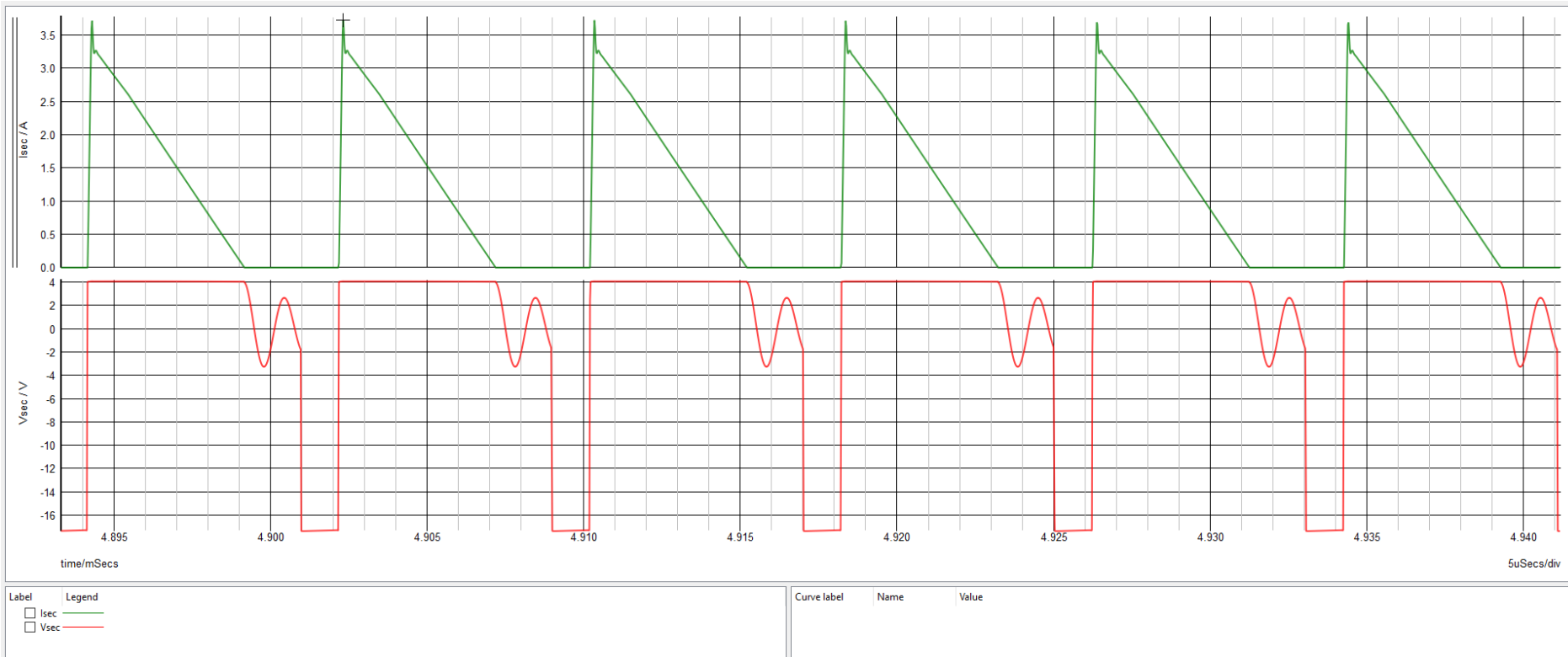
Schematic



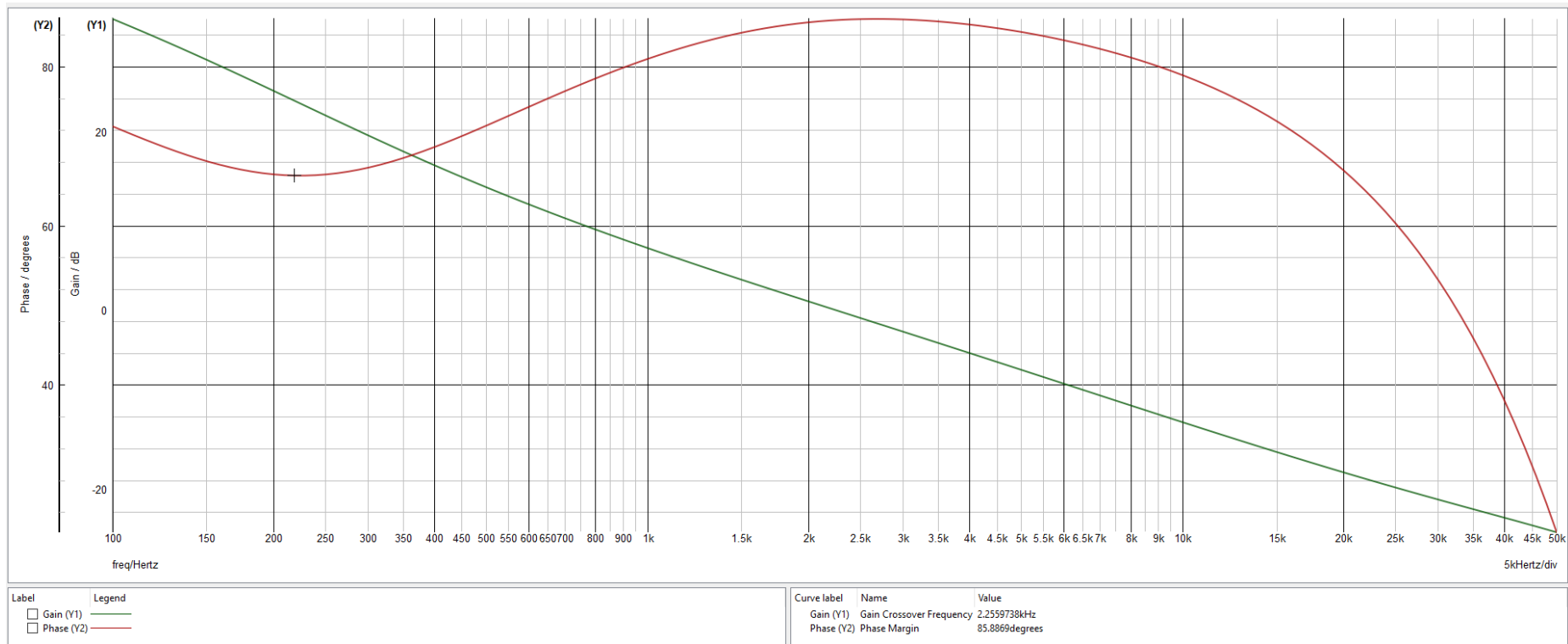
MAXREFDES1182 Primary Switching Waveforms



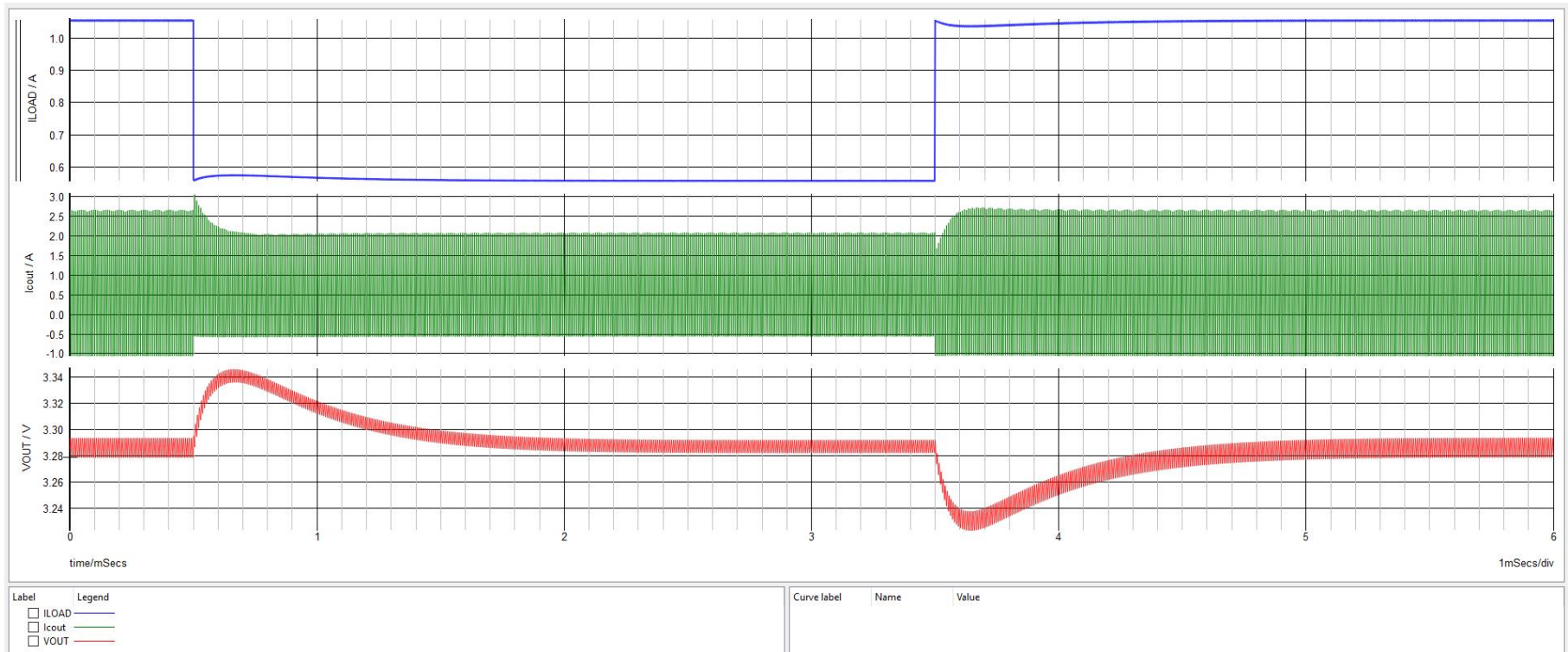
MAXREFDES1182 Secondary Switching Waveforms



MAXREFDES1182 Bode Plot



MAXREFDES1182 Load Step Transient Response



MAXREFDES1182: Startup Waveforms

