

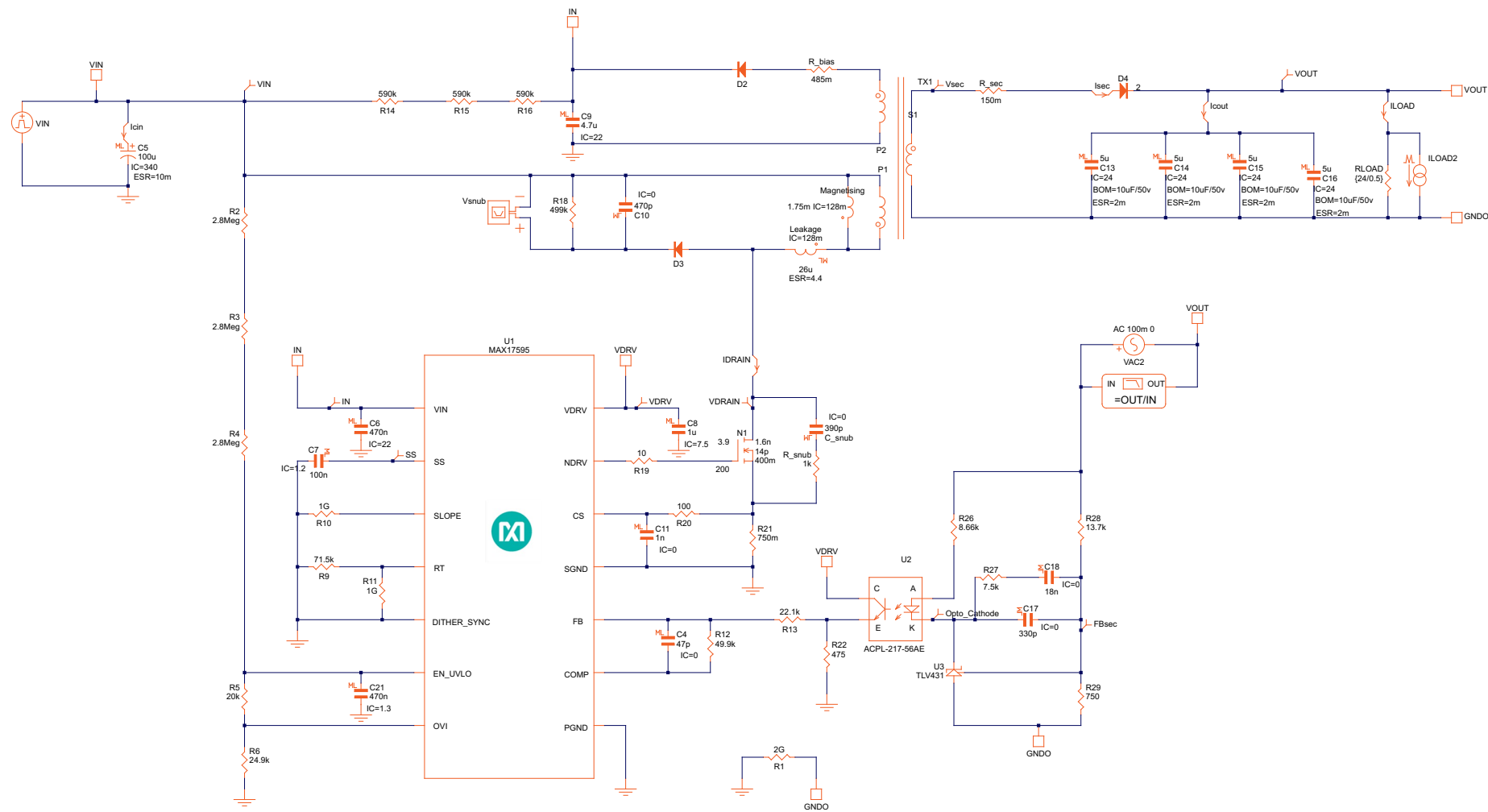
# MAXREFDES1013

## OASIS Schematic Documentation

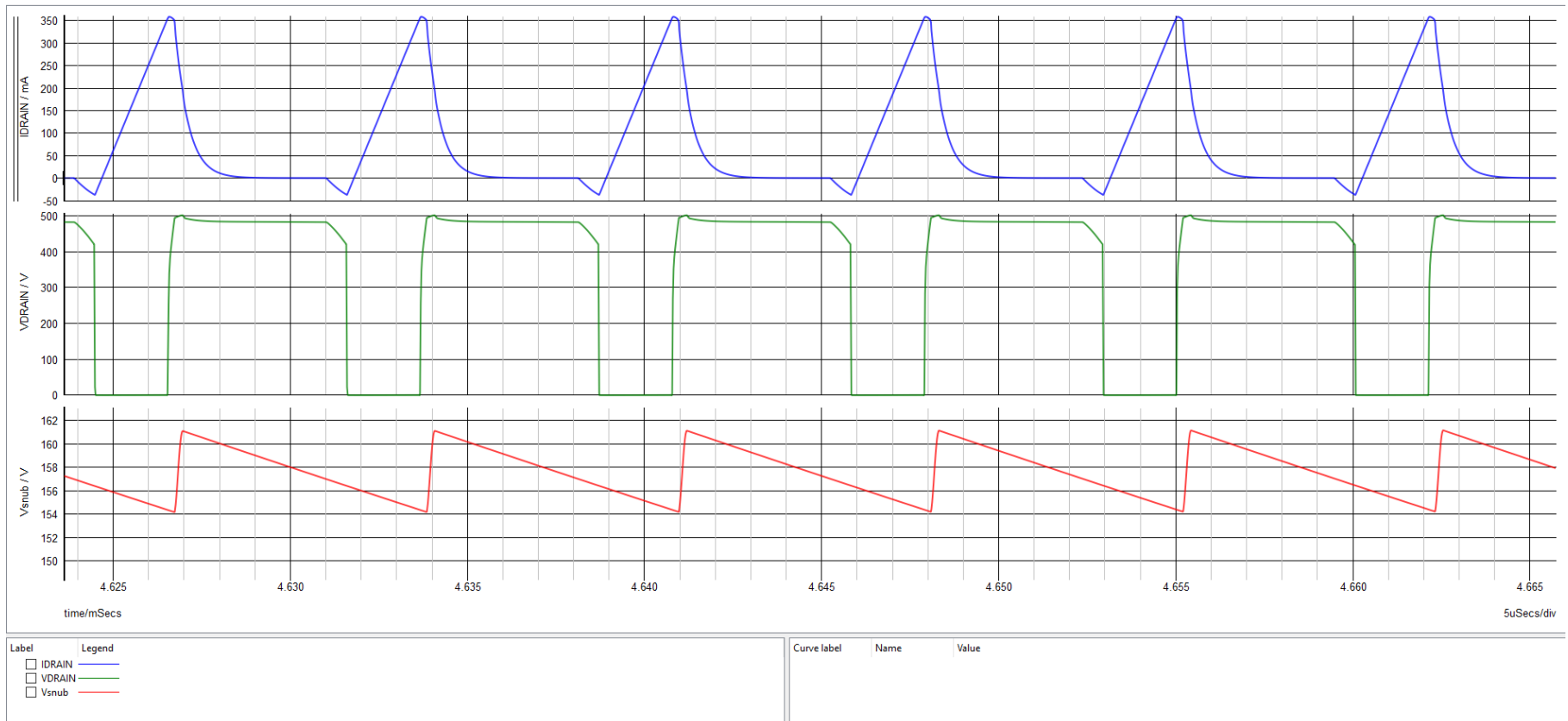
# MAXREFDES1013 Design Requirements and Configuration

Primary Specifications	Values	Comments
Part Number:	MAX17595	
Schematic Name:	MAXREFDES1013	
Mode:	Offline Isolated DCM Flyback	
Default Simulation:	Steady-State (POP), AC Loop, Load Step	
Design Requirements:		
Vin(Max):	240VAC	
Vin(Nom):	220VAC	
Vin(Min):	200VAC	
Switching Frequency:	140kHz	
Vout:	12V	
Iout:	0.5A	

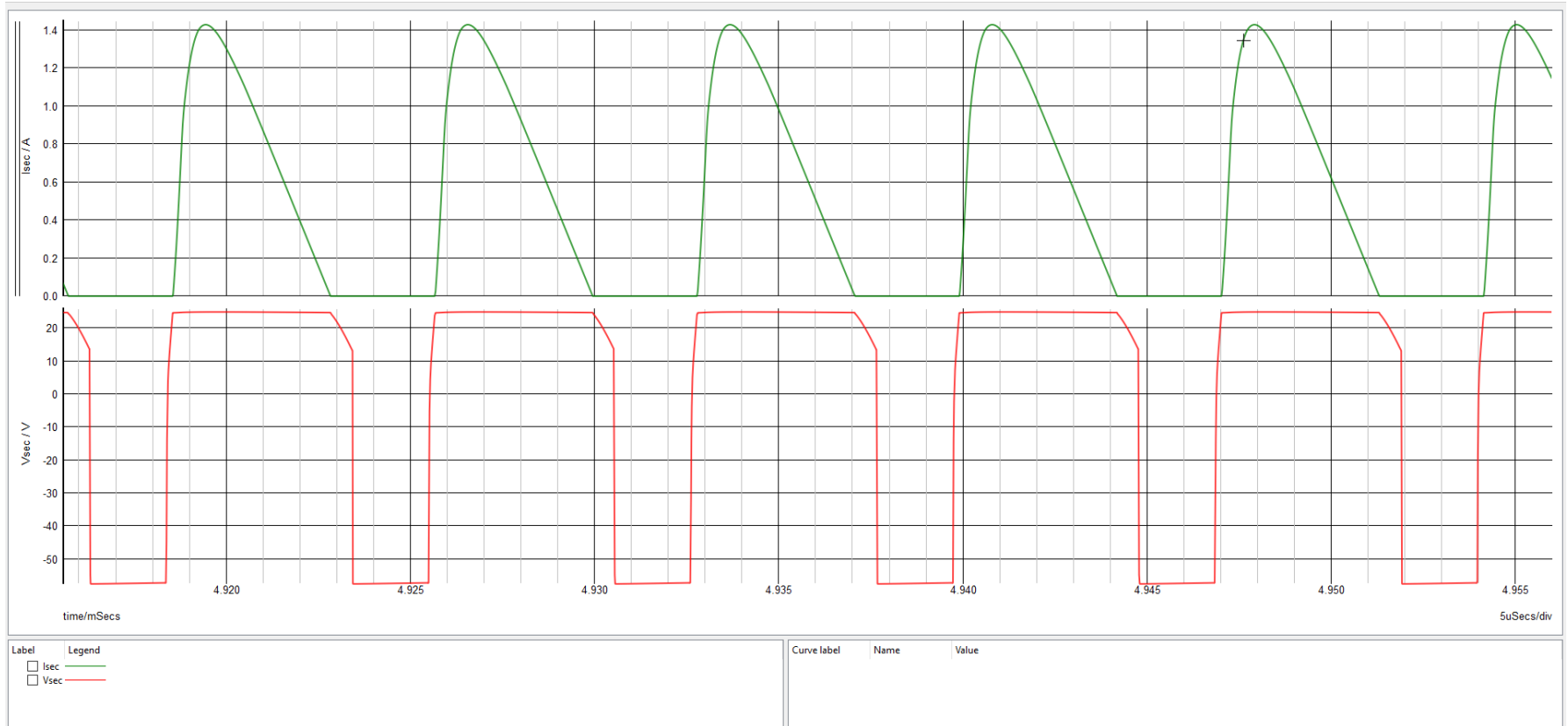
# Schematic



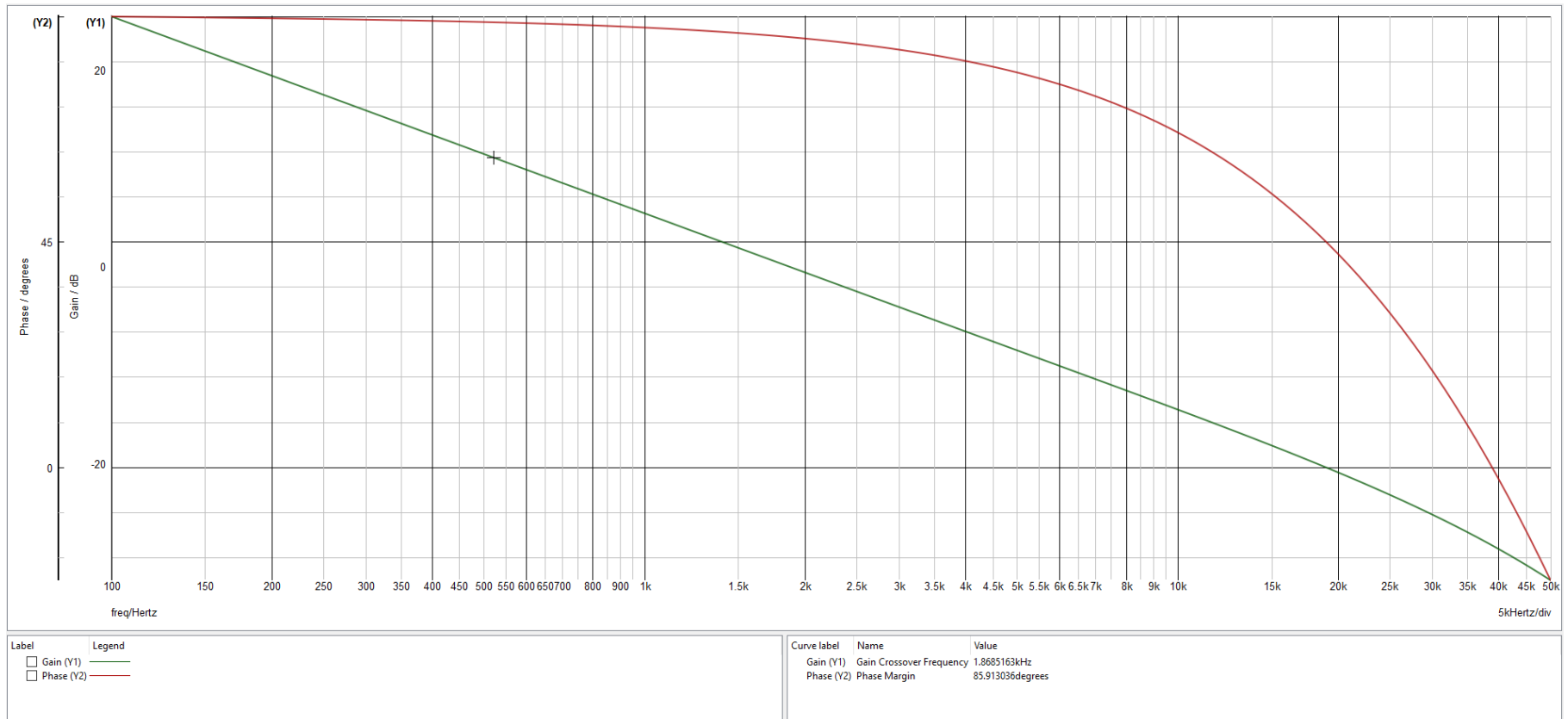
# MAXREFDES1013 Primary Switching Waveforms



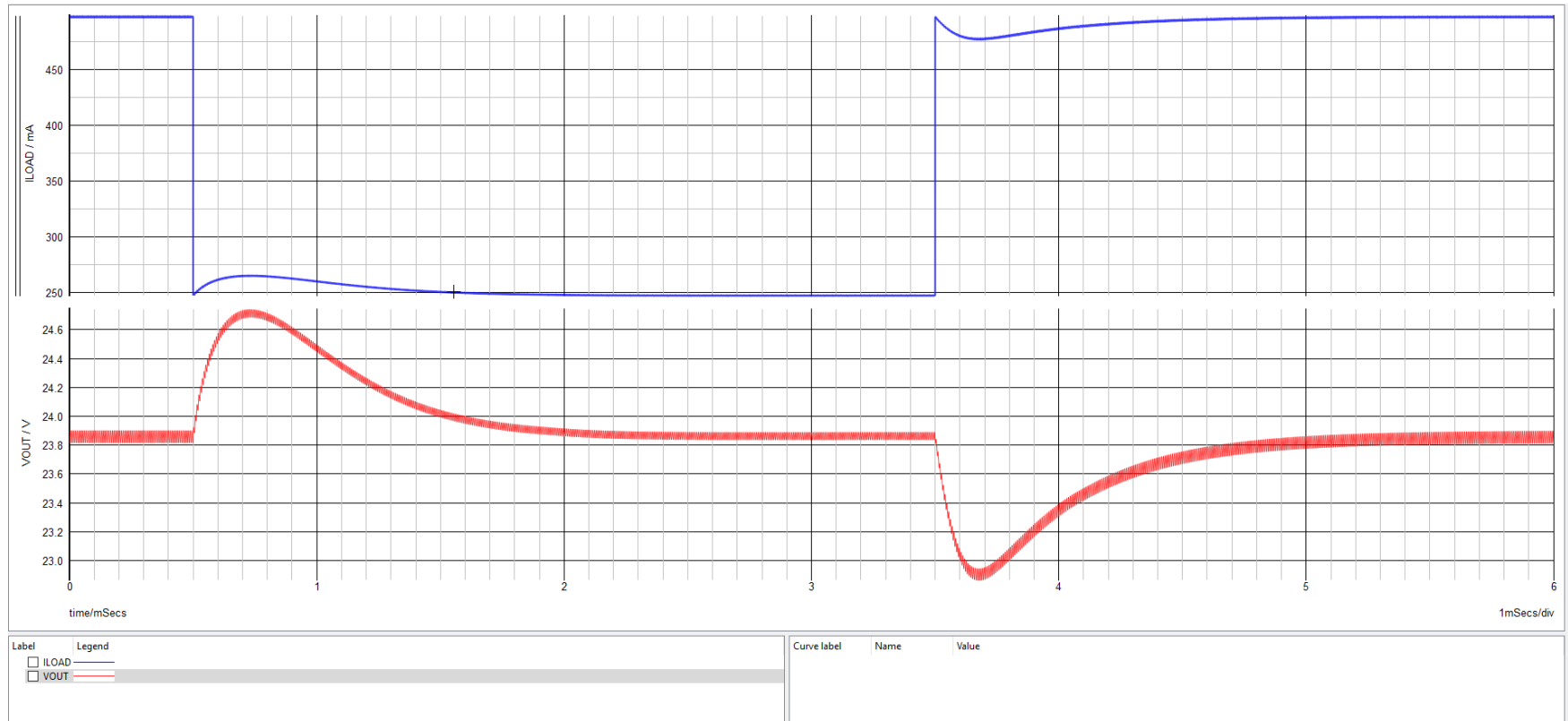
# MAXREFDES1013 Secondary Switching Waveforms



# MAXREFDES1013 Bode Plot



# MAXREFDES12013 Load Step Transient Response



# MAXREFDES1013: Startup Waveforms

