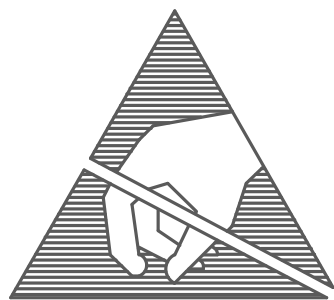


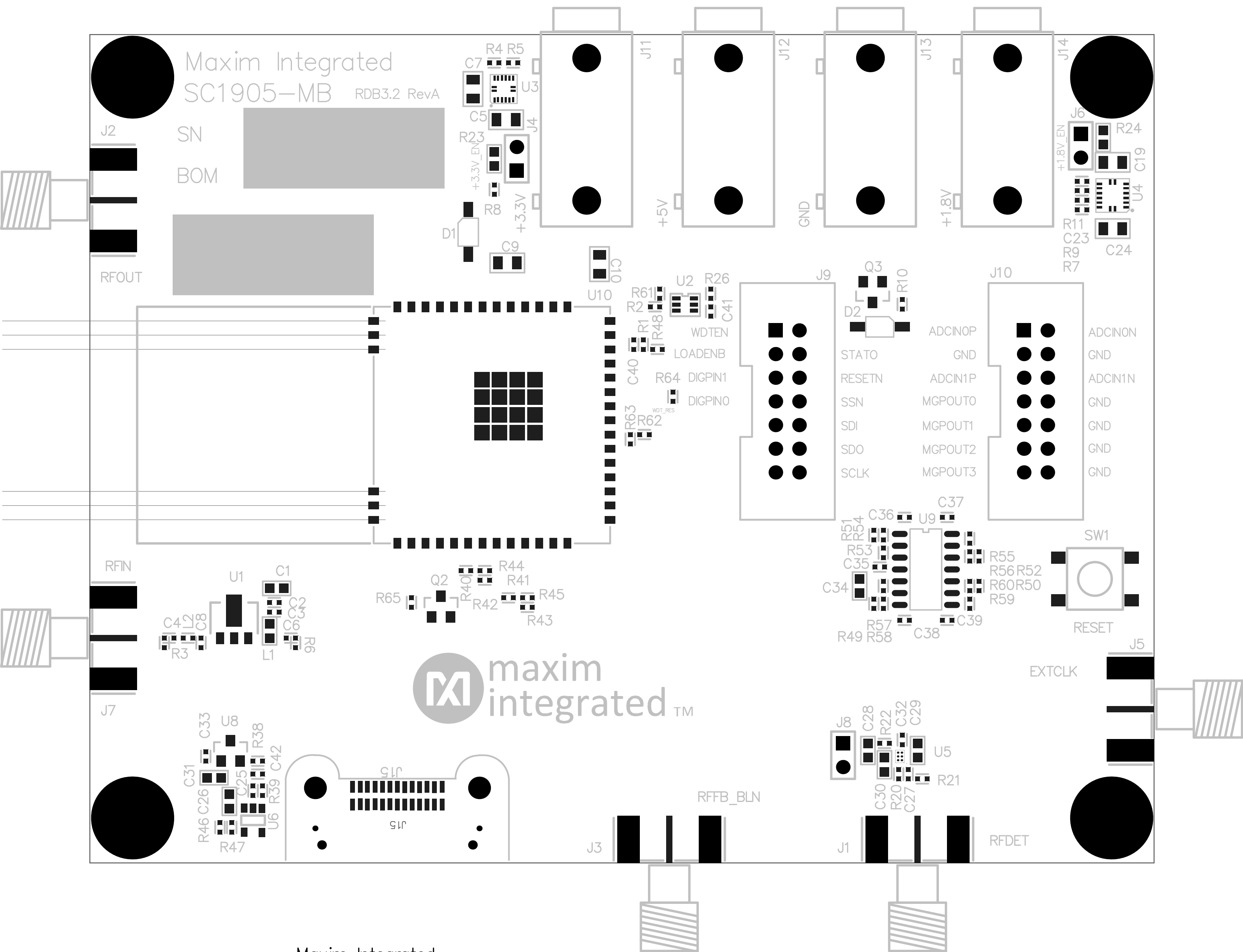
ALL PROCESSES MUST BE ROHS COMPLIANT.



CAUTION

THIS ASSEMBLY INCORPORATES
STATIC SENSITIVE DEVICES
ASSEMBLY AND HANDLING MUST BE DONE AT AN
APPROVED STATIC FREE STATION

CAUTION

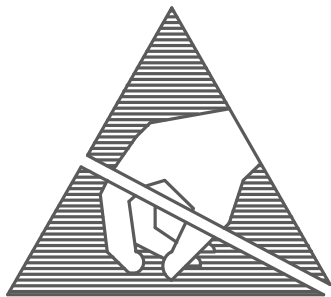


Maxim Integrated
SC1905-MB ASSEMBLY DRAWING
(RDB3.2 REVA)

SILK TOP

ASSY TOP

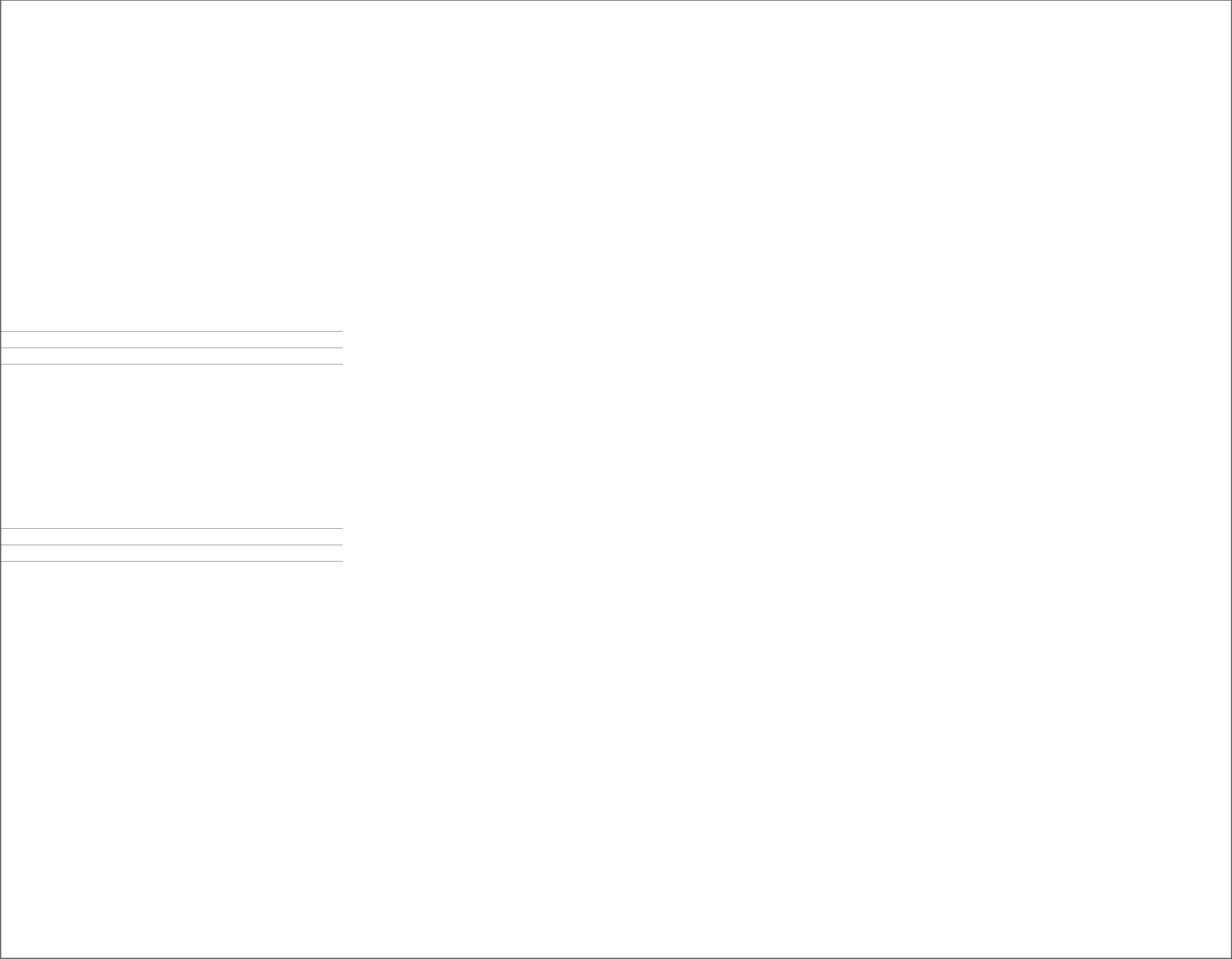
ALL PROCESSES MUST BE ROHS COMPLIANT.



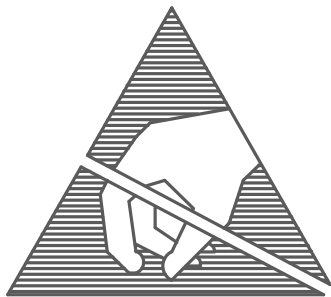
CAUTION

THIS ASSEMBLY INCORPORATES
STATIC SENSITIVE DEVICES
ASSEMBLY AND HANDLING MUST BE DONE AT AN
APPROVED STATIC FREE STATION

CAUTION



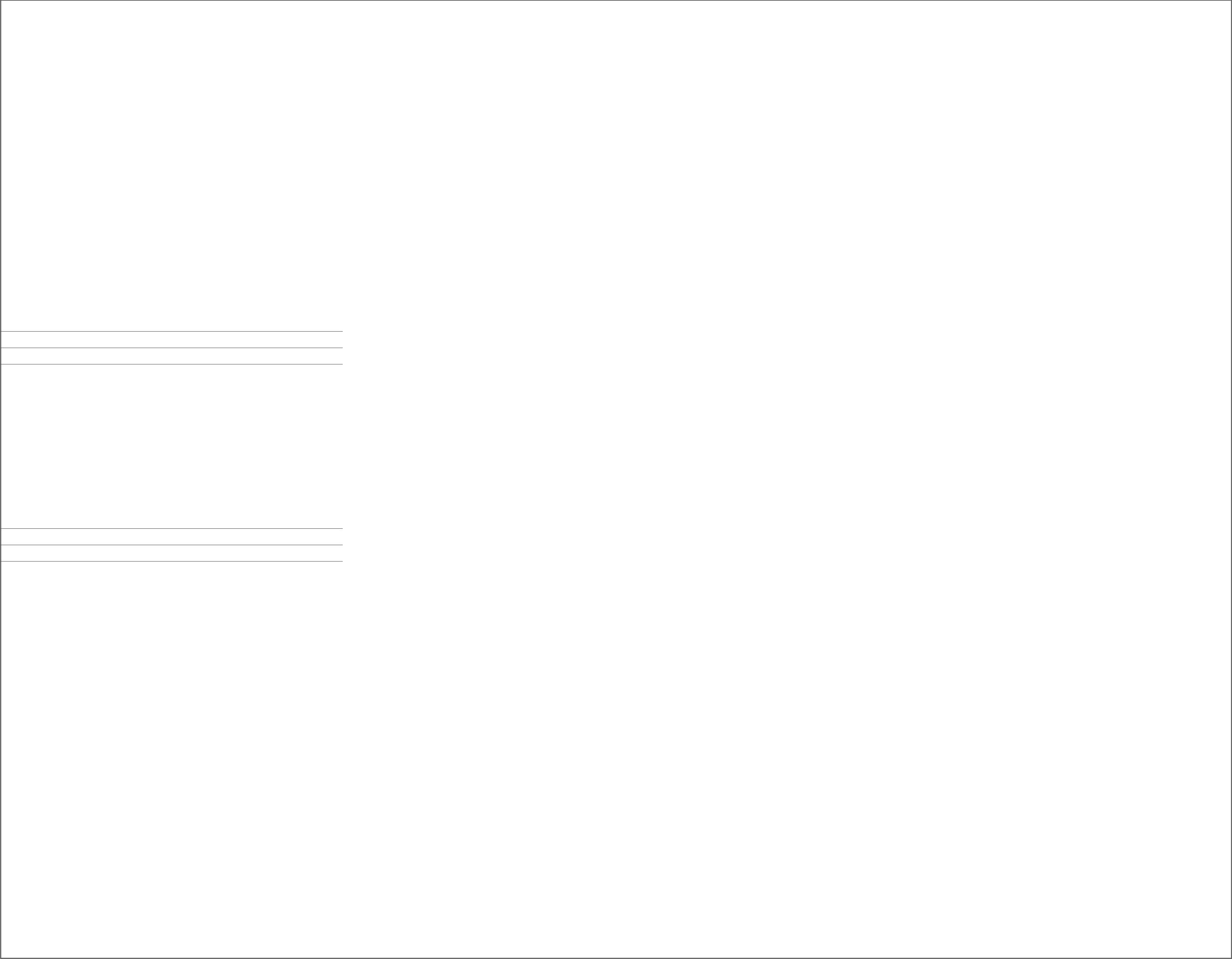
ALL PROCESSES MUST BE ROHS COMPLIANT.



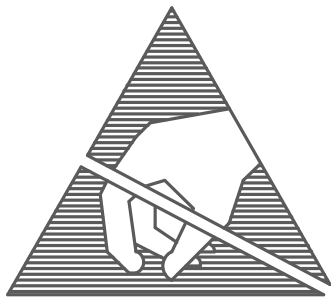
CAUTION

THIS ASSEMBLY INCORPORATES
STATIC SENSITIVE DEVICES
ASSEMBLY AND HANDLING MUST BE DONE AT AN
APPROVED STATIC FREE STATION

CAUTION



ALL PROCESSES MUST BE ROHS COMPLIANT.



CAUTION

THIS ASSEMBLY INCORPORATES
STATIC SENSITIVE DEVICES
ASSEMBLY AND HANDLING MUST BE DONE AT AN
APPROVED STATIC FREE STATION

CAUTION

