

REVISIONS			
REV	DESCRIPTION	APPROVED	DATE



This document contains information considered proprietary, and shall not be reproduced wholly or in part, nor disclosed to others without specific written permission.

HARDWARE NAME:MAXM17545_EVKIT_A

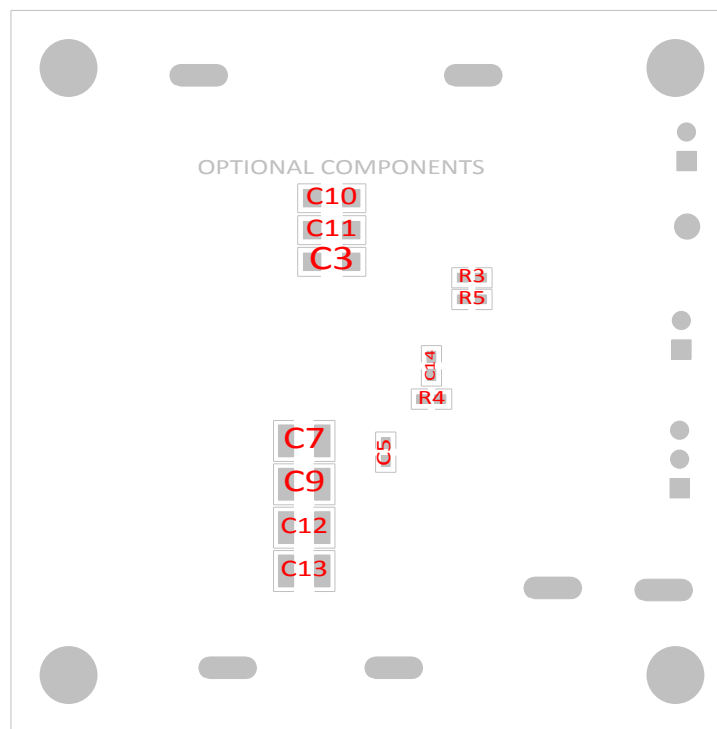
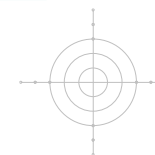
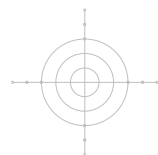
HARDWARE NUMBER:EPCBM17545

ENGINEER:NATTORN PONGRATANANUKUL

DESIGNER:CHRISTIAN BULANHAGUI

DATE: 11/26/2014

ODB++/GERBER:



maxim integrated™

THE INFORMATION CONTAINED IN THIS DOCUMENT IS PROPRIETARY TO MAXIM. THE INFORMATION IN THIS DOCUMENT IS NOT TO BE SHOWN, REPRODUCED, OR DISCLOSED TO ANYONE OUTSIDE OF MAXIM, WITHOUT PRIOR WRITTEN PERMISSION FROM MAXIM.

HARDWARE NAME:
ASSEMBLY DWG. (BOTTOM)
MAXM17545_EVKIT_A

DRAWN BY: C. BULANHAGUI DATE: 11/28/2014
CHECKED BY: DATE:
APPR. BY: DATE:
APPR. BY: DATE:

HARDWARE NUMBER: EPCBM17545
NOT TO SCALE

REV A
SHEET 1 OF 1