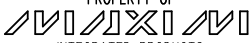
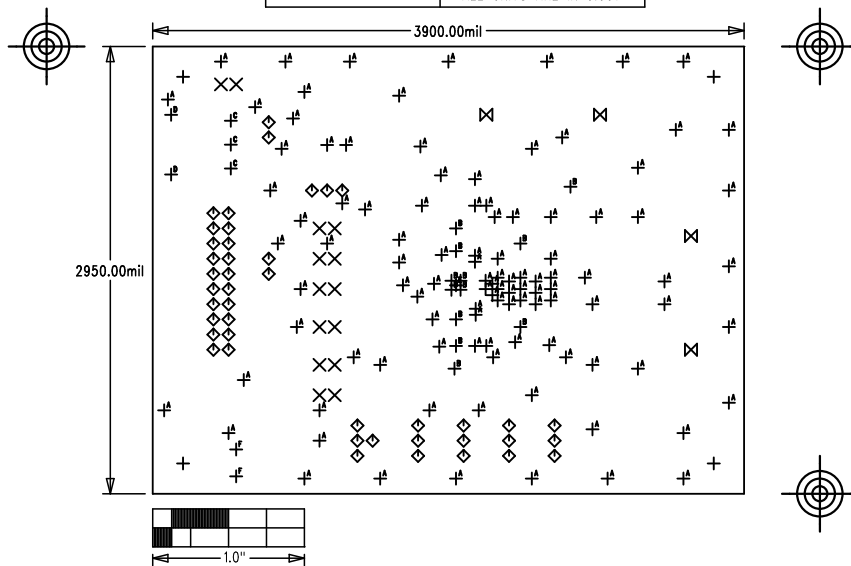


| | |
|---|-------------------------|
| MAX9768 EVALUATION KIT | |
| P/N: EPCB9768 | REV B |
| PROPERTY OF  INTEGRATED PRODUCTS | |
| LAYER DRILL & MECHANICALS | |
| DATE: | ALL UNITS ARE IN 0.001" |



| SIZE | QTY | SYM | PLATED | TOL |
|------|-----|----------------|--------|--------|
| 125 | 4 | + | YES | +/-3.0 |
| 40 | 14 | X | YES | +/-3.0 |
| 37 | 43 | ◇ | YES | +/-3.0 |
| 257 | 4 | ⊠ | YES | +/-3.0 |
| 16 | 106 | ⊕ ^A | YES | +/-3.0 |
| 20 | 12 | ⊕ ^B | YES | +/-3.0 |
| 59 | 3 | ⊕ ^C | YES | +/-3.0 |
| 71 | 2 | ⊕ ^D | YES | +/-3.0 |
| 35 | 1 | ⊕ ^E | YES | +/-3.0 |
| 100 | 2 | ⊕ ^F | YES | +/-3.0 |

NOTES: UNLESS OTHERWISE SPECIFIED

- FABRICATE USING PROVIDED GERBER FILES PER LATEST REVISION OF IPC-A-600 UNLESS OTHERWISE NOTED.
- MATERIAL: RoHS COMPLIANT FR-408 OR SIMILAR LAMINATE MATERIAL WITH $T_g \geq 170$ AND COMPATIBLE WITH LEAD-FREE SOLDERING PROCESS.
- BOARD DIMENSIONS: 2.950"X3.900" +/- 0.010".
BOARD THICKNESS: 0.062"
- LAYERS: 2
- MINIMUM TRACE/SPACING: 10 MILS/8MILS.
- COPPER CLAD FINISH: 1oz MINIMUM ALL LAYERS
- SURFACE MOUNT PADS:94
- SOLDERMASK: GREEN LPI SMOBC.
- LEGENDS: WHITE, SINGLE-SIDED, NON-CONDUCTIVE EPOXY INK OR EQUIVALENT.
CLIPPED ALL LEGENDS FROM EXPOSED METAL.
- PLATING: MUST BE LEAD FREE AND RoHS COMPLIANT.
- FINISH: VENDOR SHOULD USE THE MOST ECONOMICAL LEAD FREE AND RoHS COMPLIANT PROCESS AVAILABLE OR AS SPECIFIED IN PURCHASE ORDER.
APPROVED FINISH:
HASL LEAD-FREE
IMMERSION TIN
IMMERSION GOLD
- VENDOR LOGO & DATE CODE: ALLOWED IN INK ON BOTTOM SIDE ONLY.
- THRU HOLES: 0.001" MIN.
- TOLERANCES:
PLATED-THRU HOLES: +/-0.003"
PATTERN-TO-PATTERN: +/-0.005"
LEGEND TO LEGEND: +/-0.007"
SOLDERMASK TO PATTERN: +/-0.005".