

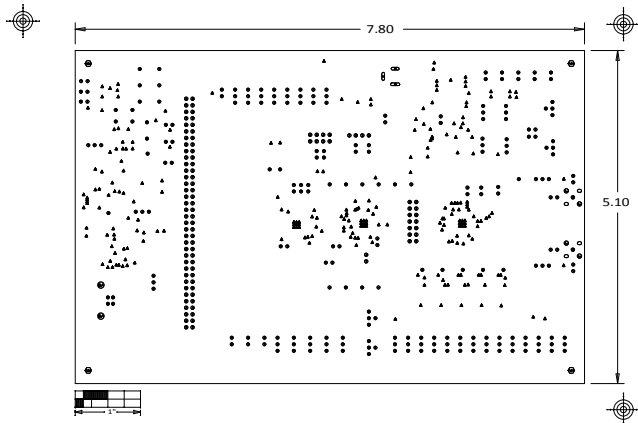
REVISIONS			
REV	DESCRIPTION	APPROVED	DATE
A	RELEASE		

LAMINATION DIAGRAM				
LAYER NUMBER	LAYER NAME	FINISHED CU WEIGHT (OZ)	DIELECTRIC THICKNESS (in.)	DIELECTRIC MATERIAL
1	TOP	1		FOIL
			0.004	ISOLA-FR408HR
2	LAYER2	1		
			0.048	ISOLA-FR408HR
3	LAYER3	1		
			0.004	ISOLA-FR408HR
4	BOTTOM	1		FOIL

THE FINISHED PCB THICKNESS TO BE: 0.0625" +/- 0.010"

IMPEDANCE TABLE				
LAYER	50 OHM	65 OHM	100 OHM TRACE / SPACE	75 OHM TRACE / SPACE
TOP	0.006	-	0.006/0.012	-

 <b>PT. HARIM MANDIRI</b> <small>PT. HARIM MANDIRI Jl. Raya Cendekia No. 100 Jakarta Barat 12160 Telp. (021) 53111111 Fax. (021) 53111111 Email: info@harimmandiri.com</small>		<small>REVISI NO. 01 REVISI 1 REVISI 2 REVISI 3 REVISI 4 REVISI 5 REVISI 6 REVISI 7 REVISI 8 REVISI 9 REVISI 10 REVISI 11 REVISI 12 REVISI 13 REVISI 14 REVISI 15 REVISI 16 REVISI 17 REVISI 18 REVISI 19 REVISI 20 REVISI 21 REVISI 22 REVISI 23 REVISI 24 REVISI 25 REVISI 26 REVISI 27 REVISI 28 REVISI 29 REVISI 30 REVISI 31 REVISI 32 REVISI 33 REVISI 34 REVISI 35 REVISI 36 REVISI 37 REVISI 38 REVISI 39 REVISI 40 REVISI 41 REVISI 42 REVISI 43 REVISI 44 REVISI 45 REVISI 46 REVISI 47 REVISI 48 REVISI 49 REVISI 50 REVISI 51 REVISI 52 REVISI 53 REVISI 54 REVISI 55 REVISI 56 REVISI 57 REVISI 58 REVISI 59 REVISI 60 REVISI 61 REVISI 62 REVISI 63 REVISI 64 REVISI 65 REVISI 66 REVISI 67 REVISI 68 REVISI 69 REVISI 70 REVISI 71 REVISI 72 REVISI 73 REVISI 74 REVISI 75 REVISI 76 REVISI 77 REVISI 78 REVISI 79 REVISI 80 REVISI 81 REVISI 82 REVISI 83 REVISI 84 REVISI 85 REVISI 86 REVISI 87 REVISI 88 REVISI 89 REVISI 90 REVISI 91 REVISI 92 REVISI 93 REVISI 94 REVISI 95 REVISI 96 REVISI 97 REVISI 98 REVISI 99 REVISI 100</small>
HARDWARE NAME: MAX278A_82A_EV01_A		
HARDWARE NUMBER:		
ENGINEER: YOUSOF FATNI		DESIGNER: ABRHAM DIMAPUS
DATE: 01/03/2015	COB-VISOR: FAB_NOTES	



DRILL CHART: TOP to BOTTOM					
ALL UNITS ARE IN MILS					
FIGURE	SIZE	TOLERANCE	PLATED	QTY	NOTES
	10.0	+3.0/-8.0	PLATED	145	
	18.0	+3.0/-16.0	PLATED	77	
	20.0	+3.0/-18.0	PLATED	77	
	37.4	+3.0/-3.0	PLATED 4	4	
	39.37	+3.0/-3.0	PLATED 42	42	
	41.34	+3.0/-3.0	PLATED 16	16	
	43.31	+3.0/-3.0	PLATED 172	172	
	45.28	+3.0/-3.0	PLATED 102	102	
	61.0	+3.0/-3.0	PLATED 4	4	
	62.99	+3.0/-3.0	PLATED 4	4	
	90.55	+3.0/-3.0	PLATED 2	2	
	125.0	+3.0/-3.0	PLATED 4	4	
	118.11x39.37	+3.0/-3.0	PLATED 1	1	
	118.11x39.37	+3.0/-3.0	PLATED 1	1	
	137.8x39.37	+3.0/-3.0	PLATED 1	1	

<div> <div> <div></div> <div>maxim</div> <div>integrated™</div> </div> <div> <div>TITLE:</div> <div>FABRICATION DWG.</div> <div>MAX9278A_82A_EVKIT_A</div> </div> </div>			<div> <div>SIZE</div> <div>E</div> </div> <div> <div>DRAWING NO.</div> <div></div> </div> <div> <div>REV</div> <div>A</div> </div>	
<div> <div> <div>FRACTIONS</div> <div>DECIMALS</div> <div>ANGLES</div> </div> <div> <div><math>\frac{\text{XX}}{\text{YY}}</math></div> <div>.XX +/- .01</div> <div><math>\frac{\text{XX}}{\text{YY}}</math></div> </div> </div>			<div> <div> <div>CHECKED BY:</div> <div>DATE:</div> </div> <div> <div>APPR. BY:</div> <div>DATE:</div> </div> </div>	
<div> <div>TOLERANCES UNLESS OTHERWISE SPECIFIED</div> <div>SEE NOTES</div> </div>			<div> <div> <div>THE INFORMATION CONTAINED IN THIS DOCUMENT IS PROPRIETARY TO MAXIM. THE INFORMATION IN THIS DOCUMENT IS NOT TO BE SHOWN, REPRODUCED, OR DISCLOSED TO ANYONE OUTSIDE OF MAXIM WITHOUT PRIOR WRITTEN PERMISSION FROM MAXIM.</div> <div>DRAWN BY: A.DIMAPILIS    DATE: OCT 2015</div> </div> </div>	
<div> <div>MATERIAL:</div> <div>SEE NOTES</div> </div>			<div> <div>NOT TO SCALE</div> <div>TEMPLATE REV 1.7</div> <div>SHEET 1 OF 1</div> </div>	