

MAX7060 EVALUATION KIT+

P/N: EPCB7060+

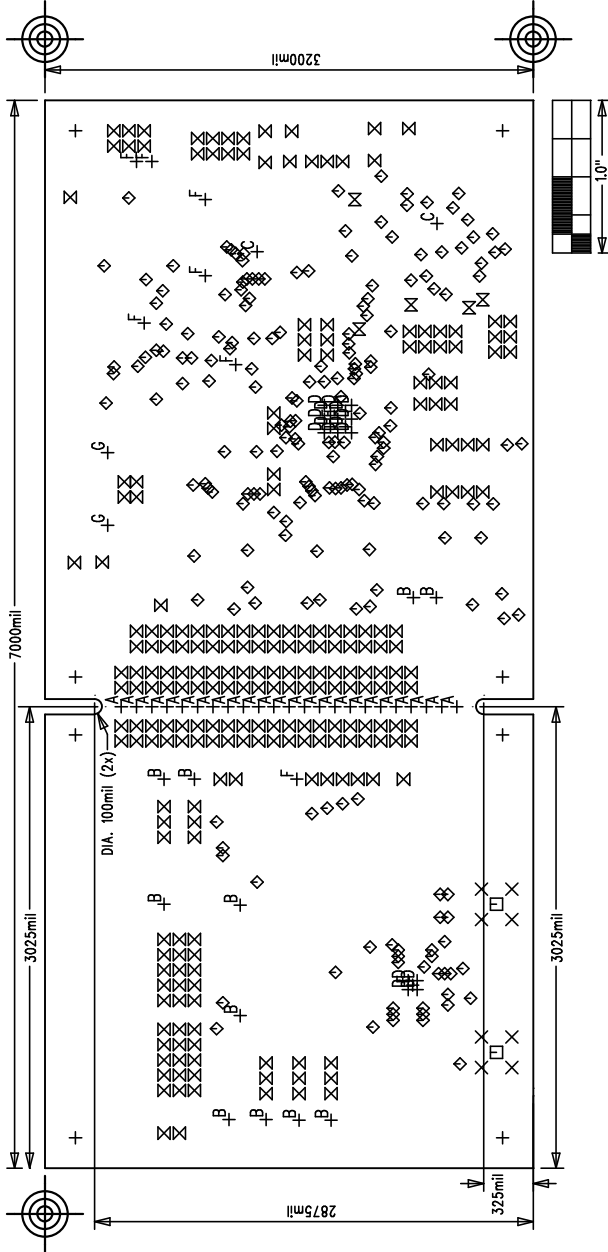
REV
A

PROPERTY OF
INTEGRATED PRODUCTS

LAYER
DRILL & MECHANICALS

DATE:
ALL UNITS ARE IN 0.001"

- NOTES: UNLESS OTHERWISE SPECIFIED
- FABRICATE USING PROVIDED GERBER FILES PER LATEST REVISION OF IPC-A-600 UNLESS OTHERWISE NOTED.
 - MATERIAL: ROHS COMPLIANT FR-408 OR SIMILAR LAMINATE MATERIAL WITH Tg=170 AND COMPATIBLE WITH LEAD-FREE SOLDERING PROCESS.
 - BOARD DIMENSIONS: 7.00"x3.20" +/- 0.010".
BOARD THICKNESS: 0.062"
 - LAYERS: 2.
 - MINIMUM TRACE/SPACING: 8 MILS/8MILS
 - COPPER CLAD FINISH: 1oz ON ALL LAYERS.
 - SURFACE MOUNT PADS: 496
 - SOLDERMASK: GREEN LPI SMOBC.
 - LEGENDS: WHITE, DOUBLE-SIDED, NON-CONDUCTIVE EPOXY INK OR EQUIVALENT. CLIPPED ALL LEGENDS FROM EXPOSED METAL.
 - PLATING: MUST BE LEAD FREE AND ROHS COMPLIANT.
 - FINISH: VENDOR SHOULD USE THE MOST ECONOMICAL LEAD FREE AND ROHS COMPLIANT PROCESS AVAILABLE OR AS SPECIFIED IN PURCHASE ORDER.
 - APPROVED FINISH:
HASL LEAD-FREE
IMMERSION TIN
IMMERSION GOLD
 - VENDOR LOGO & DATE CODE: ALLOWED IN INK ON BOTTOM SIDE ONLY.
 - THRU HOLES: 0.007" MIN.
 - TOLERANCES:
PLATED-THRU HOLES: +/-0.003"
PATTERN-TO-PATTERN: +/-0.005"
LEGEND TO LEGEND: +/-0.007"
SOLDERMASK TO PATTERN: +/-0.005"



SIZE	QTY	SYM	PLATED	TOL
0.12	8	+	YES	+/-0.003
0.07	8	×	YES	+/-0.003
0.06	2	□	YES	+/-0.003
0.015	203	◇	YES	+/-0.003
0.037	241	⊗	YES	+/-0.003
0.05	5	⊗	YES	+/-0.003
0.037	23	+ ^A	NO	+/-0.003
0.067	11	+ ^B	YES	+/-0.003
0.125	2	+ ^C	NO	+/-0.003
0.02	16	+ ^D	YES	+/-0.003
0.035	2	+ ^E	YES	+/-0.003
0.04	7	+ ^F	YES	+/-0.003
0.1	2	+ ^G	YES	+/-0.003