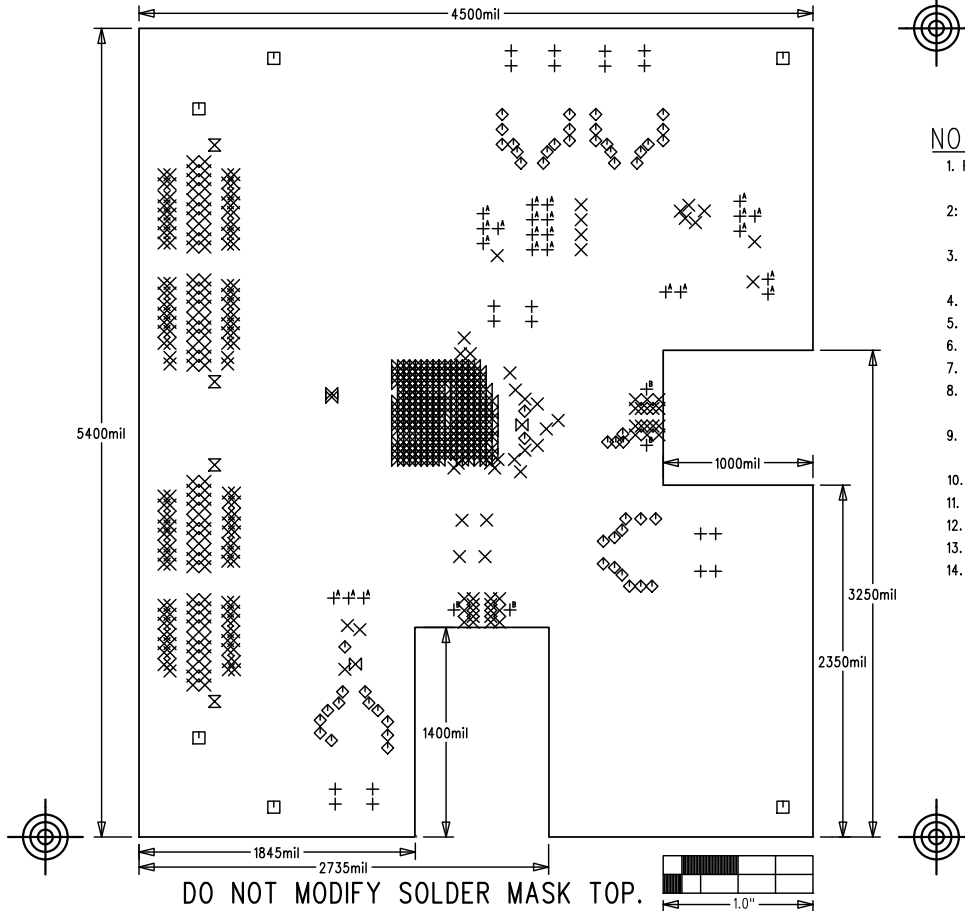


MAX5882 EVALUATION KIT+	
P/N: EPCB5882+	REV A
PROPERTY OF WILLIAMS INTEGRATED PRODUCTS	
LAYER	DRILL & MECHANICALS
DATE:	ALL UNITS ARE IN 0.001"



DO NOT MODIFY SOLDER MASK TOP.

NOTES: UNLESS OTHERWISE SPECIFIED

- FABRICATE USING PROVIDED GERBER FILES PER LATEST REVISION OF IPC-A-600 UNLESS OTHERWISE NOTED.
- MATERIAL: RoHS COMPLIANT FR-408 COMPATIBLE WITH LEAD-FREE SOLDERING PROCESS AND ROGERS4003C.
- BOARD DIMENSIONS: 4.50"x5.40" +/- 0.010".
BOARD THICKNESS: 0.092"
- LAYERS: 12.
- MINIMUM TRACE/SPACING: 4 MILS/4MILS.
- COPPER CLAD FINISH: 1oz MINIMUM ON OUTER LAYERS AND 1/2oz ON INNER LAYERS.
- SURFACE MOUNT PADS: 731.
- SOLDERMASK: GREEN TAIYO PSR-4000.
SOLDERMASK APERTURE TOLERANCE: +/-0.0005".
- LEGENDS: WHITE, DOUBLE-SIDED, NON-CONDUCTIVE EPOXY INK OR EQUIVALENT.
CLIPPED ALL LEGENDS FROM EXPOSED METAL.
- PLATING: MUST BE LEAD FREE AND RoHS COMPLIANT.
- FINISH: 3-8u" IMMERSION Au OVER 100u" Ni.
- VENDOR LOGO & DATE CODE: ALLOWED IN INK ON BOTTOM SIDE ONLY.
- THRU HOLES: 0.001" MIN.
- TOLERANCES:
PLATED-THRU HOLES: +/-0.003"
PATTERN-TO-PATTERN: +/-0.005"
LEGEND TO LEGEND: +/-0.007"

SIZE	QTY	SYM	PLATED	TOL
40	20	+	YES	+/-3.0
15	276	X	YES	+/-3.0
125	6	□	YES	+/-3.0
25	55	◇	YES	+/-3.0
40	4	⊗	NO	+/-3.0
8	247	⊗	YES	+/-3.0
37	23	+ ^A	YES	+/-3.0
83	4	+ ^B	YES	+/-3.0

	100 OHM DIFFERENTIAL		50 OHM SINGLE-ENDED		25 OHM SINGLE-ENDED		
	TRACE WIDTH	SPACING	TRACE WIDTH	TRACE WIDTH	TRACE WIDTH		
LAYER 1 TOP	10	6	10	15	30	ROGERS 4003C Er=3.38	1.4MIL
LAYER 2 GND						PRE-PREG Er=3.8	0.7MIL
LAYER 3 SIGNAL	4	4	4	N/A	N/A	PRE-PREG Er=3.8	0.7MIL
LAYER 4 GND						PRE-PREG Er=3.8	0.7MIL
LAYER 5 SIGNAL	4	4	4	N/A	N/A	PRE-PREG Er=3.8	0.7MIL
LAYER 6 GND						PRE-PREG Er=3.8	0.7MIL
LAYER 7 GND						CORE AS NEEDED	0.7MIL
LAYER 8 SIGNAL	4	4	4	13	N/A	PRE-PREG Er=3.8	0.7MIL
LAYER 9 GND						PRE-PREG Er=3.8	0.7MIL
LAYER 10 SIGNAL	4	4	4	13	N/A	PRE-PREG Er=3.8	0.7MIL
LAYER 11 GND						PRE-PREG Er=3.8	0.7MIL
LAYER 12 BOTTOM	10	10	10	N/A	N/A	PRE-PREG Er=3.8	1.4MIL

IMPEDANCE TOLERANCE: +/-10%

ALL DIMENSION IN MIL (0.001 INCH) UNLESS OTHERWISE SPECIFIED.

N/A - NOT AVAILABLE. DO NOT ROUTE TRACES OF THIS TYPE ON THE INDICATE LAYERS.