
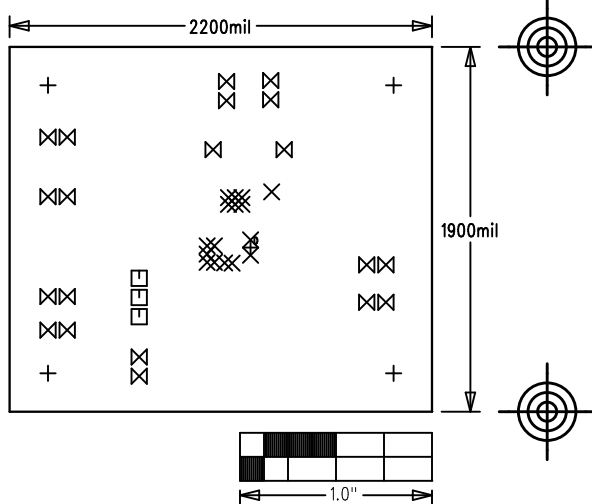


| | |
|---|-------------------------|
| MAX17501HT EVALUATION KIT | |
| P/N: EPCB17501HT | REV A |
| PROPERTY OF  INTEGRATED PRODUCTS | |
| LAYER | DRILL & MECHANICALS |
| DATE: | ALL UNITS ARE IN 0.001" |



| SIZE | QTY | SYM | PLATED | THR/PRTL | TOL |
|------|-----|----------------|--------|----------|--------|
| 125 | 4 | + | YES | THR | +/-3.0 |
| 15 | 16 | X | YES | THR | +/-3.0 |
| 37 | 3 | □ | YES | THR | +/-3.0 |
| 40 | 20 | ⊗ | YES | THR | +/-3.0 |
| 20 | 1 | ⊕ ^D | YES | THR | +/-3.0 |

NOTES: UNLESS OTHERWISE SPECIFIED

- FABRICATE USING PROVIDED GERBER FILES PER LATEST REVISION OF IPC-A-600 UNLESS OTHERWISE NOTED.
- MATERIAL: RoHS COMPLIANT FR-408 OR SIMILAR LAMINATE MATERIAL WITH $T_g \geq 170$ AND COMPATIBLE WITH LEAD-FREE SOLDERING PROCESS.
- BOARD DIMENSIONS: 2.20"x1.90" +/- 0.010".
BOARD THICKNESS: 0.062"
- LAYERS: 2.
- MINIMUM TRACE/SPACING: 10 MILS/8MILS
- COPPER CLAD FINISH: 1oz ON ALL LAYERS.
- SURFACE MOUNT PADS: 47.
- SOLDERMASK: GREEN LPI SMOBC.
- LEGENDS: WHITE, SINGLE-SIDED, NON-CONDUCTIVE EPOXY INK OR EQUIVALENT.
CLIPPED ALL LEGENDS FROM EXPOSED METAL.
- PLATING: MUST BE LEAD FREE AND RoHS COMPLIANT.
- FINISH: VENDOR SHOULD USE THE MOST ECONOMICAL LEAD FREE AND RoHS COMPLIANT PROCESS AVAILABLE OR AS SPECIFIED IN PURCHASE ORDER.
APPROVED FINISH:
HASL LEAD-FREE
IMMERSION TIN
IMMERSION GOLD
- VENDOR LOGO & DATE CODE: ALLOWED IN INK ON BOTTOM SIDE ONLY.
- THRU HOLES: 0.001" MIN.
- TOLERANCES:
PLATED-THRU HOLES: +/-0.003"
PATTERN-TO-PATTERN: +/-0.005"
LEGEND TO LEGEND: +/-0.007"
SOLDERMASK TO PATTERN: +/-0.005"