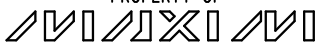
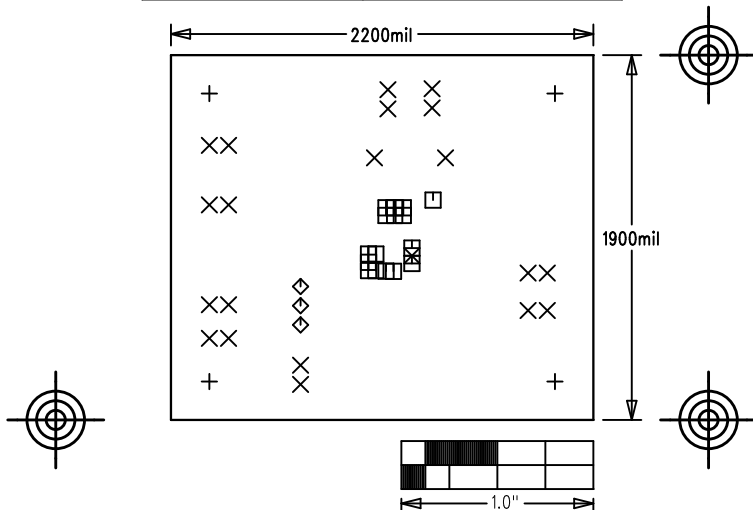


MAX17501GT EVALUATION KIT	
P/N: EPCB17501GT	REV A
PROPERTY OF  INTEGRATED PRODUCTS	
LAYER	DRILL & MECHANICALS
DATE:	ALL UNITS ARE IN 0.001"

NOTES: UNLESS OTHERWISE SPECIFIED

- FABRICATE USING PROVIDED GERBER FILES PER LATEST REVISION OF IPC-A-600 UNLESS OTHERWISE NOTED.
- MATERIAL: RoHS COMPLIANT FR-408 OR SIMILAR LAMINATE MATERIAL WITH $T_g \geq 170$ AND COMPATIBLE WITH LEAD-FREE SOLDERING PROCESS.
- BOARD DIMENSIONS: 2.20"X1.90" ± 0.010 ".
BOARD THICKNESS: 0.062"
- LAYERS: 2.
- MINIMUM TRACE/SPACING: 10 MILS/8MILS
- COPPER CLAD FINISH: 1oz MINIMUM ON ALL LAYERS.
- SURFACE MOUNT PADS: 47.
- SOLDERMASK: GREEN LPI SMOBC.
- LEGENDS: WHITE, SINGLE-SIDED, NON-CONDUCTIVE EPOXY INK OR EQUIVALENT. CLIPPED ALL LEGENDS FROM EXPOSED METAL.
- PLATING: MUST BE LEAD FREE AND RoHS COMPLIANT.
- FINISH: VENDOR SHOULD USE THE MOST ECONOMICAL LEAD FREE AND RoHS COMPLIANT PROCESS AVAILABLE OR AS SPECIFIED IN PURCHASE ORDER.
APPROVED FINISH:
HASL LEAD-FREE
IMMERSION TIN
IMMERSION GOLD
- VENDOR LOGO & DATE CODE: ALLOWED IN INK ON BOTTOM SIDE ONLY.
- THRU HOLES: 0.001" MIN.
- TOLERANCES:
PLATED-THRU HOLES: ± 0.003 "
PATTERN-TO-PATTERN: ± 0.005 "
LEGEND TO LEGEND: ± 0.007 "
SOLDERMASK TO PATTERN: -0.005 "



SIZE	QTY	SYM	PLATED	TOL
125	4	+	YES	± 3
40	20	X	YES	± 3
15	16	□	YES	± 3
37	3	◇	YES	± 3
20	1	⊗	YES	± 3