
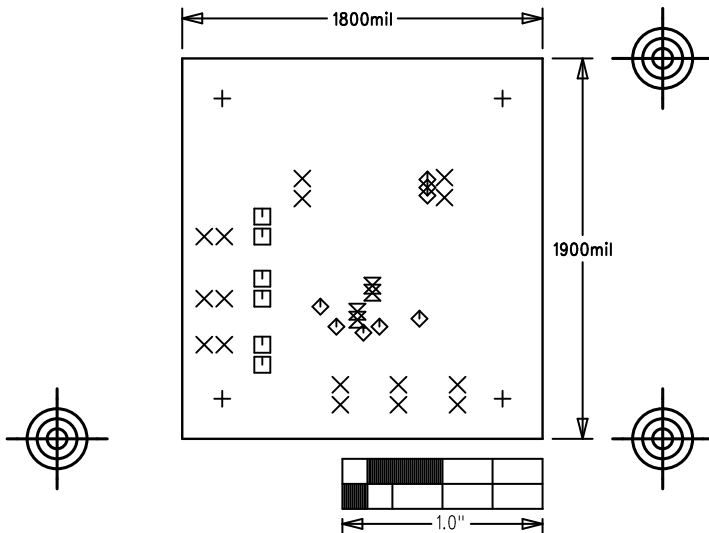


MAX15062A EVKIT	
P/N: EPCB15062A	REV A
PROPERTY OF	
 <b>maxim integrated™</b>	
LAYER DRILL & MECHANICALS	
DATE:	ALL UNITS ARE IN 0.001"



SIZE	QTY	SYM	PLATED	TOL
125	4	+	YES	+/-3
40	16	X	YES	+/-3
37	6	□	YES	+/-3
15	8	◇	YES	+/-3
10	4	⊗	YES	+/-3

## NOTES: UNLESS OTHERWISE SPECIFIED

- FABRICATE USING PROVIDED GERBER FILES PER LATEST REVISION OF IPC-A-600 UNLESS OTHERWISE NOTED.
- MATERIAL: RoHS COMPLIANT FR-408 OR SIMILAR LAMINATE MATERIAL WITH  $T_g \geq 170$  AND COMPATIBLE WITH LEAD-FREE SOLDERING PROCESS.
- BOARD DIMENSIONS: 1.80"X1.90"  $\pm 0.010$ "  
BOARD THICKNESS: 0.062"
- LAYERS: 2.
- MINIMUM TRACE/SPACING: 10MILS/7MILS
- COPPER CLAD FINISH: 1oz ON ALL LAYERS
- SURFACE MOUNT PADS: 25
- SOLDERMASK: GREEN LPI SMOBC.
- LEGENDS: WHITE, SINGLE-SIDED, NON-CONDUCTIVE EPOXY INK OR EQUIVALENT.  
CLIPPED ALL LEGENDS FROM EXPOSED METAL.
- PLATING: MUST BE LEAD FREE AND RoHS COMPLIANT.
- FINISH: VENDOR SHOULD USE THE MOST ECONOMICAL LEAD FREE AND RoHS COMPLIANT PROCESS AVAILABLE OR AS SPECIFIED IN PURCHASE ORDER.  
APPROVED FINISH:  
HASL LEAD-FREE  
IMMERSION TIN  
IMMERSION GOLD
- VENDOR LOGO & DATE CODE: ALLOWED IN INK ON BOTTOM SIDE ONLY.
- THRU HOLES: 0.001" MIN.
- TOLERANCES:  
PLATED-THRU HOLES:  $\pm 0.003$ "  
PATTERN-TO-PATTERN:  $\pm 0.005$ "  
LEGEND TO LEGEND:  $\pm 0.007$ "  
SOLDERMASK TO PATTERN:  $\pm 0.005$ "